

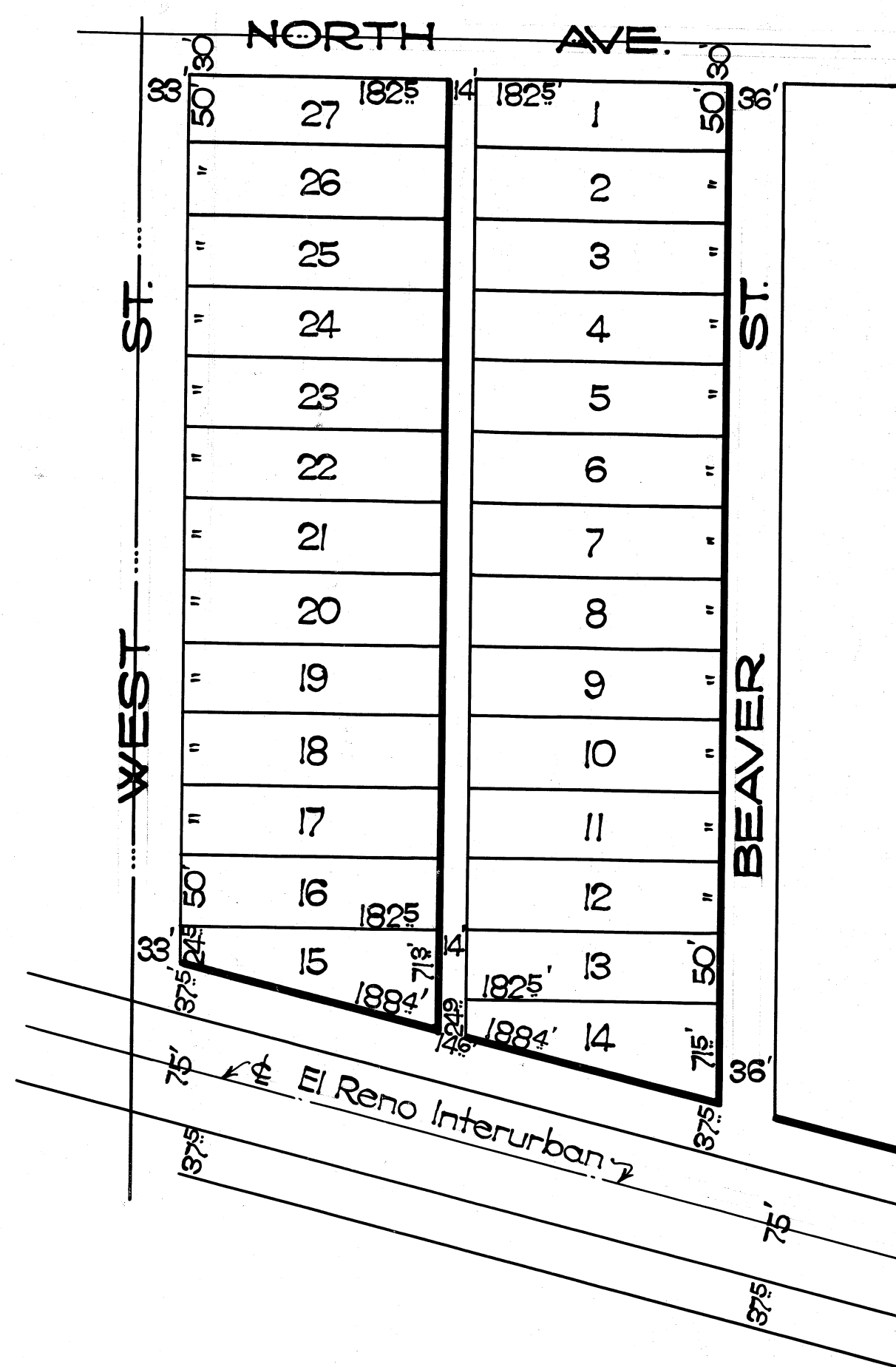
98362

STATE OF OKLAHOMA } S.S.  
OKLAHOMA COUNTY }  
This instrument was filed for Record  
at the County Clerk's Office on this 21st day of June, 1926.  
Book 24 JUN 29 1926 page 45

W. A. JACKSON, County Clerk  
By *W. A. Gaulty* Deputy

\$6.00

### CORRECTION PLAT BEAVER SUBDIVISION OF BLOCK (22) TWENTY-TWO BETHANY-OKLAHOMA



I, Warren E. Moore, the undersigned a competent Civil Engineer do hereby certify that on the 27th day of March, 1922, a survey was made of Block 22, Bethany, Oklahoma, and a plat made and filed of same named Beaver Subdivision of Block 22, Bethany, Oklahoma; and in transposing the field notes (50) fifty feet was omitted, which should have been shown in said Plat of Beaver Subdivision, and the annexed plat shows survey and plat, and correction of plat which is now on file in the County Clerks Office, Oklahoma County, Oklahoma.

*Warren E. Moore*  
Civil Engineer

State of Oklahoma }  
County of Oklahoma }

Before me the undersigned a Notary Public in and for said County and State on the 25th day of June, 1926 personally appeared Warren E. Moore to me known to be the identical person who executed the within and foregoing instrument, and acknowledged to me that he executed the same as his free and voluntary act and deed for the uses and purposes therein set forth.  
Witness my hand and official seal this 25th day of June, 1926.  
My commission expires  
Aug. 18th, 1927.

*B. B. Packer*  
Notary Public.