

LEGAL DESCRIPTION

Tracts of land located in the Northeast Quarter (NE/4) of Section Eight (8), Township Thirteen North (T. 13 N.), Range Three West (R. 3 W.), of the Indian Meridian (I.M.), Oklahoma City, Oklahoma County, Oklahoma, more particularly described as follows: BEGINNING at the Southwest Corner of Lot 1, Block 2, Brasswood; thence N. 00° 14' 17" W. along the West Line of said Lot 1 a distance of 107.18 feet; thence S. 89° 45' 43" W. a distance of 576.00 feet; thence S. 00° 14' 17" E. a distance of 110.00 feet to a point on the North right-of-way line of N.W. 149th Street; thence N. 89° 45' 43" E. along the North Line of N.W. 149th Street a distance of 540.33 feet to a point of curvature; thence along a curve to the left having a radius of 226.70 feet a distance of 35.82 feet to the Point or Place of Beginning; AND BEGINNING at the Southeast Corner of Lot 1, Block 3, Brasswood; thence S. 54° 14' 05" W. a distance of 268.60 feet; thence S. 30° 39' 42" W. a distance of 160.99 feet; thence S. 51° 38' 49" W. a distance of 49.09 feet to the Southeast Corner of Lot 5, Block 3; thence N. 39° 14' 15" W. along the East Line of said Lot 5 a distance of 248.10 feet to a point on the South right-of-way line of N.W. 149th Street; thence N. 50° 45' 45" E. a distance of 76.54 feet to a point of curvature; thence along a curve to the right having a radius of 34.50 feet a distance of 27.24 feet to a point of reverse curve; thence along a curve to the left having a radius of 50.00 feet a distance of 119.59 feet to the Southwest Corner of Lot 1, Block 3; thence S. 89° 45' 15" E. along the South Line of said Lot 1 a distance of 367.85 feet to the Point or Place of Beginning; AND BEGINNING at the Northeast Corner of Lot 10, Block 4, Brasswood; thence S. 89° 45' 43" W. a distance of 274.50 feet; thence N. 00° 14' 17" W. a distance of 110.00 feet to a point on the South right-of-way line of N.W. 149th Street; thence N. 89° 45' 43" E. a distance of 249.50 feet; thence S. 44° 14' 17" E. a distance of 35.36 feet; thence S. 00° 14' 17" E. a distance of 85.00 feet to the Point or Place of Beginning; AND BEGINNING at the Southeast Corner of Lot 4, Block 7, Brasswood; thence S. 05° 00' 55" W. a distance of 178.83 feet; thence S. 14° 29' 04" W. a distance of 182.84 feet; thence S. 15° 05' 25" E. a distance of 95.88 feet to the Northeast rear property corner of Lot 11, Block 7; thence N. 82° 44' 38" W. along the North line of said Lot 11 a distance of 232.22 feet to a point on the East right-of-way line of Collingswood Lane; thence North on a curve to the left having a radial bearing of N. 82° 44' 38" W. and a radius of 125.00 feet a distance of 16.35 feet; thence N. 00° 14' 17" W. a distance of 340.00 feet to a point of curvature; thence Northeastly on a curve to the right having a radius of 34.5 feet a distance of 27.24 feet to a point of reverse curve; thence along a curve to the left having a radius of 50.00 feet a distance of 40.47 feet to the Southwest property corner of Lot 4, Block 7; thence N. 89° 45' 43" E. along the South property line of said Lot 4 a distance of 242.44 feet to the Point or Place of Beginning; AND COMMENCING at the Southwest Corner of Lot 15, Block 7 of Brasswood; thence S. 89° 45' 43" W. a distance of 50.00 feet to a point on the West right-of-way line of Brasswood Boulevard; thence N. 00° 14' 17" W. a distance of 3.43 feet to the Point of Beginning; thence S. 89° 45' 43" W. a distance of 110.00 feet; thence N. 00° 14' 17" W. a distance of 335.00 feet; thence N. 89° 45' 43" E. a distance of 85.00 feet; thence S. 44° 14' 17" E. a distance of 35.36 feet; thence S. 00° 14' 17" E. a distance of 310.00 feet to the Point or Place of Beginning.

CITY PLANNING COMMISSION APPROVAL

I, Bob McKillips, Chairman of the Planning Commission for the City of Oklahoma City, State of Oklahoma, hereby certify that the said Commission duly approved the annexed plat on the day of February, 1990.

Bob McKillips, Chairman

BONDED ABSTRACTER'S CERTIFICATE

The undersigned, a duly qualified and lawfully Bonded Abstractor of titles in and for the County of Oklahoma, State of Oklahoma, hereby certifies that the records of said County show that the title to the land shown on the annexed plat is vested in RTA LAND DEVELOPMENT LIMITED PARTNERSHIP, and that on the 22nd day of March, 1990, there are no actions pending or judgments of any nature in any court or on file with the clerk of any court in said County and State against said land, or the owners thereof, and that the taxes are paid for the year 1989 and prior years, and that there are no outstanding tax sales certificates against said land and no tax deeds are issued to any one person; that there are no liens, mortgages, or other encumbrances of any kind against the land included in the annexed plat, except mortgages, minerals, water rights and easements of record previously reserved, excepted or granted.

IN WITNESS WHEREOF, said Bonded Abstractor has caused this instrument to be executed this 22nd day of March, 1990.

ATTEST: MARY J. GYMAN, Secretary; ELLIOTT C. SANDERSON, President; OKLAHOMA CITY ABSTRACT & TITLE CO.

LAND SURVEYOR'S CERTIFICATE

I, Richard G. Moore, do hereby certify that I am a Registered Land Surveyor, and that the annexed plat correctly represents an accurate survey made under my supervision, and that the monuments shown hereon actually exist and their positions are correctly shown.

Richard G. Moore, L.S. 140

STATE OF OKLAHOMA ) ss: COUNTY OF CLEVELAND )

Before me, the undersigned, a Notary Public, in and for the County of Cleveland, State of Oklahoma, personally appeared Richard G. Moore, to me known to be the identical person who executed the same as his free and voluntary act and deed. Given under my hand and seal the 5th day of January, 1990.

My Commission Expires: September 22, 1990. Notary Public: CHARLES E. CRUMPLAY

COUNTY TREASURER'S CERTIFICATE

I, Joe B. Barnes, do hereby certify that I am the duly elected, qualified and acting County Treasurer of Oklahoma County, State of Oklahoma, that the tax records of said County show all taxes are paid for the year 1989 and prior years on the land shown on the annexed plat and that the required statutory security has been deposited in the office to the County Treasurer, guaranteeing payment of the current years taxes.

IN WITNESS WHEREOF, said County Treasurer has caused this instrument to be executed at Oklahoma City, Oklahoma, on this 10th day of January, 1990.

Joe B. Barnes, County Treasurer

CERTIFICATE OF CITY CLERK

I, Thomas P. Hurley, City Clerk of the City of Oklahoma City, State of Oklahoma, hereby certify that I have examined the records of said City and find that all deferred payments or unmaturing installments upon special assessments have been paid in full and that there is no special assessment procedure now pending against the land shown on the annexed plat on this 2nd day of January, 1990.

Thomas P. Hurley, City Clerk

ACCEPTANCE OF DEDICATION OF CITY COUNCIL

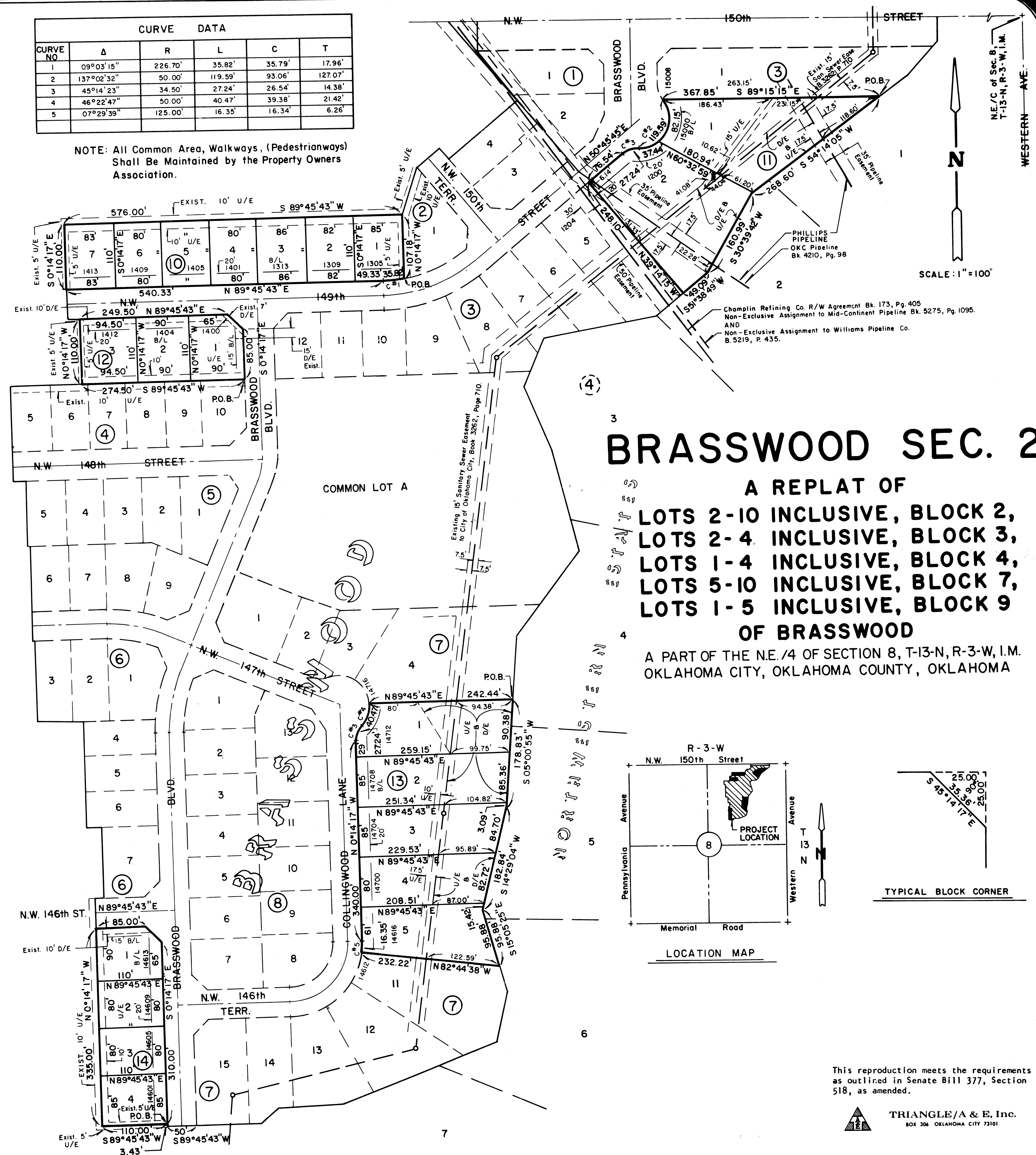
BE IT RESOLVED by the Council of the City of Oklahoma City that the dedications shown on the annexed plat are hereby accepted. ADOPTED by the Council of the City of Oklahoma City, this 2nd day of January, 1990.

ATTEST: THOMAS P. HURLEY, City Clerk; CITY OF OKLAHOMA CITY, OKLAHOMA

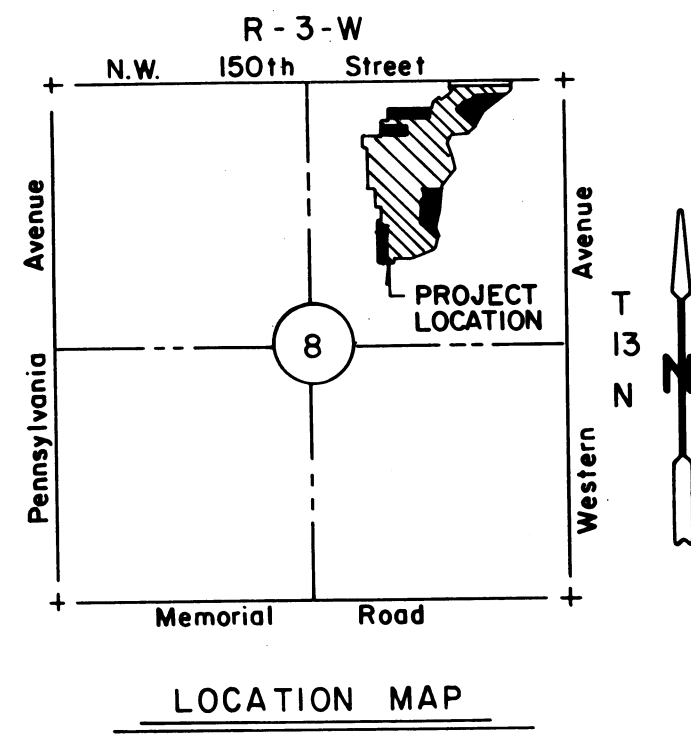
My Commission Expires: September 22, 1990. Notary Public: CHARLES E. CRUMPLAY

Table with 5 columns: CURVE NO., Δ, R, L, C, T. Contains curve data for 5 curves.

NOTE: All Common Area, Walkways, (Pedestrianways) Shall Be Maintained by the Property Owners Association.



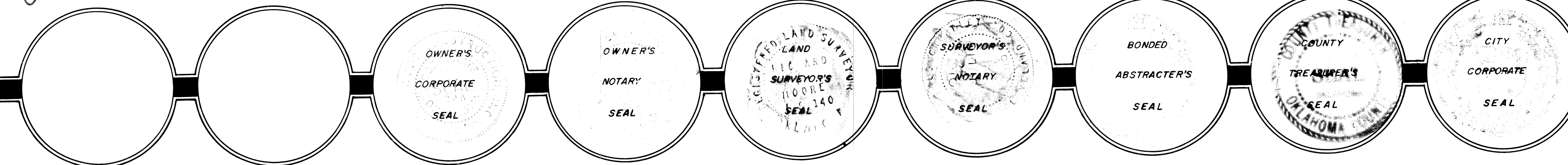
BRASSWOOD SEC. 2 A REPLAT OF LOTS 2-10 INCLUSIVE, BLOCK 2, LOTS 2-4 INCLUSIVE, BLOCK 3, LOTS 1-4 INCLUSIVE, BLOCK 4, LOTS 5-10 INCLUSIVE, BLOCK 7, LOTS 1-5 INCLUSIVE, BLOCK 9 OF BRASSWOOD A PART OF THE N.E./4 OF SECTION 8, T-13-N, R-3-W, I.M. OKLAHOMA CITY, OKLAHOMA COUNTY, OKLAHOMA



This reproduction meets the requirements as outlined in Senate Bill 377, Section 518, as amended.

TRIANGLE/A & E, INC. 802 306 OKLAHOMA CITY 73101

DESIGN ENGINEERS, INC. 1614 Greenbrier Place OKLAHOMA CITY, OKLAHOMA 73159 (405) 891-6333



Handwritten number 54/83