

2 of 2

DRAWING NUMBER

17/96+97

PLAN HOLD CORPORATION • IRVINE, CALIFORNIA
REPRODUCED BY NUMBER 07548
POSITION EDGE OF PRINT ON THIS LINE

DRAWING NUMBER

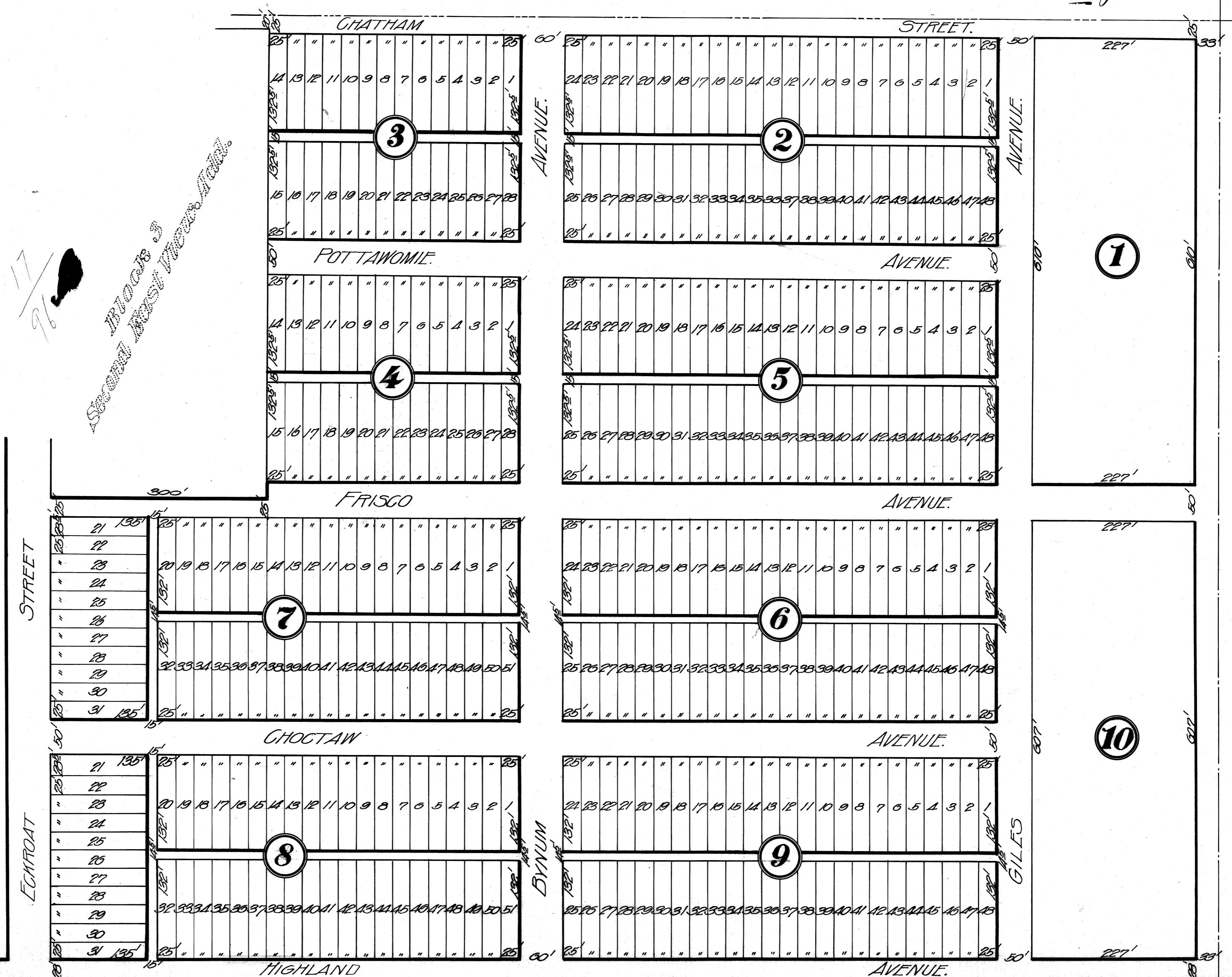
PLAN HOLD CORPORATION • IRVINE, CALIFORNIA
REPRODUCED BY NUMBER 07548
POSITION EDGE OF PRINT ON THIS LINE

CAMPBELL HEIGHTS

A SUBDIVISION OF BLOCK 4 SECOND EAST VIEW ADD. &
S.E. 1/4 OF N.E. 1/4 OF SEC. 1, TWP. 11 N., R. 3 W. OF I.M.
OKLAHOMA CITY OKLAHOMA.

Scale 1"=100'

96-97
5 Oct 9
17 76-97
J.D. Coak
\$1200/a



17/96
BLOCK 3
Second East View Add.

S.E. cor. of N.E. 1/4 Sec. 1, T. 11 N., R. 3 W. I.M.

MOORE & McCLURE,
CIVIL ENGINEERS,
OKLAHOMA CITY, OKLA.
PLAN 0210 259

11

11196+97

PLAN HOLD CORPORATION • IRVINE, CALIFORNIA

REORDER BY NUMBER 075AR

POSITION EDGE OF PRINT ON THIS LINE

KNOW ALL MEN BY THESE PRESENTS:- That Ernest T. Bynum and Maud S. Bynum, his wife, being the owners of Block Four (4), Second East View Addition to Oklahoma City, Oklahoma, and the South-East Quarter (S/E 1/4) of the North-East Quarter (N/E 1/4 of Section One (1), Township Eleven (11), North of Range Three (3), West of the Indian Meridian, have caused the same to be sub-divided into lots, blocks, streets and alleys, and that the annexed map or plat is a correct representation of saidland as sub-divided, which we hereby designate and name 'Campbell Heights', and dedicate the streets and alleys as shown on said map or plat to the public.

Signed this 9th day of July 1910.

Ernest T. Bynum
Maud S. Bynum

Block 17 Plats

State of Oklahoma)
County of Oklahoma) SS.

Before me, the undersigned, a Notary Public, in and for said county and state on this 9th day of July 1910, personally appeared Ernest T. Bynum and Maud S. Bynum, his wife, to me known to be the identical persons who executed the within and foregoing instrument and who acknowledged to me that they executed the same as their free and voluntary act and deed for the uses and purposes therein set forth.

Witness my hand and notarial seal this 9th day of July 1910.

My Commission Expires Jan. 3, 1914

W. H. Baker
Notary Public.

~~My Commission Expires May 31st, 1913.~~

17
97

I, Warren E. Moore, a resident of Oklahoma County, Oklahoma, hereby certify that I am by profession a Civil Engineer, and that at the instance of the above named parties I made the above described sub-division and that the annexed map or plat is a correct representation of said land as sub-divided by me.

Signed this 9th day of July, 1910.

Warren E. Moore
Civil Engineer.

State of Oklahoma)
County of Oklahoma) SS.

Before me, the undersigned, a Notary Public, in and for said county and state on this 9th day of July, 1910, personally appeared Warren E. Moore, to me known to be the identical person who executed the within and foregoing instrument and who acknowledged to me that he executed the same as his free and voluntary act and deed for the uses and purposes therein set forth.

Witness my hand and notarial seal this 9th day of July, 1910.

Oliver R. Rittenhouse
Notary Public.

My Commission Expires May 31st, 1913.

Block 17 Plats - Campbell Plats

97