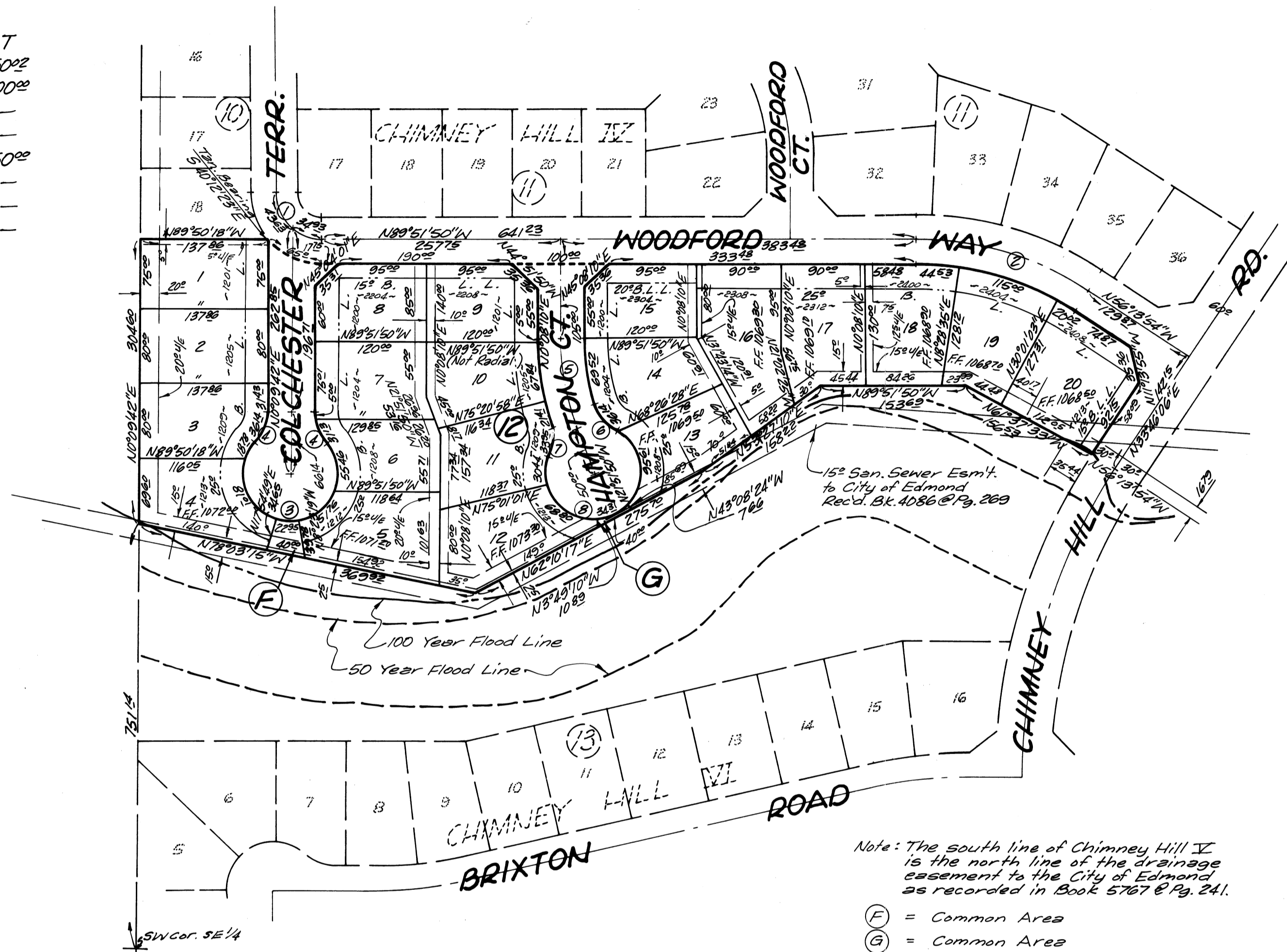


# CHIMNEY HILL V

A PART OF THE SE 1/4, 'SEC. 31, T14N, R2W, I.M.  
EDMOND, OKLAHOMA COUNTY, OKLAHOMA

THIS IS A PART OF AN APPROVED PLANNED UNIT DEVELOPMENT

No.	Δ	R	L	T
1.	90°01'32"	50 <sup>00</sup>	78 <sup>66</sup>	50 <sup>02</sup>
2.	33°37'56"	330 <sup>00</sup>	194 <sup>22</sup>	100 <sup>00</sup>
3.	202°48'57"	50 <sup>00</sup>	225 <sup>74</sup>	—
4.	41°24'35"	50 <sup>00</sup>	36 <sup>14</sup>	—
5.	22°00'00"	257 <sup>23</sup>	98 <sup>77</sup>	50 <sup>00</sup>
6.	45°41'22"	50 <sup>00</sup>	34 <sup>27</sup>	—
7.	38°54'07"	50 <sup>00</sup>	33 <sup>25</sup>	—
8.	262°36'37"	50 <sup>00</sup>	229 <sup>17</sup>	—



**COUNTY TREASURER'S CERTIFICATE**

I, THE UNDERSIGNED, DO HEREBY CERTIFY THAT I AM THE DULY ELECTED, QUALIFIED, AND ACTING COUNTY TREASURER OF OKLAHOMA COUNTY, STATE OF OKLAHOMA; THAT THE TAX RECORDS OF SAID COUNTY SHOW ALL TAXES ARE PAID FOR THE YEAR 1989 AND PRIOR YEARS ON THE LAND SHOWN ON THE ANNEXED PLAT OF CHIMNEY HILL V, AN ADDITION TO THE CITY OF EDMOND, OKLAHOMA COUNTY, STATE OF OKLAHOMA; THAT THE REQUIRED STATUTORY SECURITY HAS BEEN DEPOSITED IN THE OFFICE OF THE COUNTY TREASURER, GUARANTEEING PAYMENT OF THE CURRENT YEAR'S TAXES.

IN WITNESS WHEREOF SAID COUNTY TREASURER HAS CAUSED THIS INSTRUMENT TO BE EXECUTED AT OKLAHOMA CITY, IN OKLAHOMA COUNTY, STATE OF OKLAHOMA, THIS 11 DAY OF MAY, 1989.

OKLAHOMA COUNTY TREASURER  
BY: Jo Elaine Nicholson  
CHIEF DEPUTY

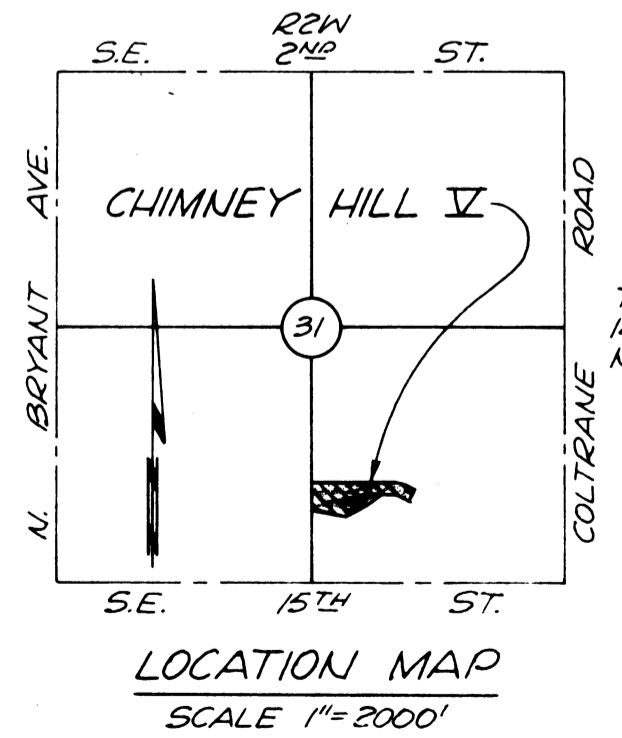
**SURVEYOR'S STATEMENT**

I, DAVID C. PHILLIPS, REGISTERED LAND SURVEYOR NO. 1277 IN THE STATE OF OKLAHOMA, HEREBY STATE THAT THE ANNEXED PLAT OF CHIMNEY HILL V, AN ADDITION TO THE CITY OF EDMOND, OKLAHOMA COUNTY, OKLAHOMA, REPRESENTS A CAREFUL SURVEY THEREOF MADE UNDER MY SUPERVISION, AND ANY MONUMENTS SHOWN THEREON ACTUALLY EXIST AND THEIR RESPECTIVE POSITIONS ARE CORRECTLY SHOWN. I FURTHER STATE THAT THIS PLAT COMPLIES WITH THE REQUIREMENTS OF OKLAHOMA SENATE BILL NO. 371, SECTION 518, AS AMENDED.

David C. Phillips  
DAVID C. PHILLIPS, OKLA. L.S. #1277

STATE OF OKLAHOMA ) SS  
COUNTY OF OKLAHOMA )  
THE FOREGOING INSTRUMENT WAS ACKNOWLEDGED BEFORE ME BY DAVID C. PHILLIPS, BEFORE ME THIS 8TH DAY OF AUGUST, 1988.  
MY COMMISSION EXPIRES:  
DECEMBER 10, 1989.

D. M. Holmes  
NOTARY PUBLIC



**OWNER'S CERTIFICATE AND DEDICATION**

THAT J. W. COYLE ENTERPRISES, A LIMITED PARTNERSHIP, IS THE OWNER OF ALL PROPERTY CONTAINED AND INCLUDED IN THE ANNEXED PLAT AND HAS CAUSED THE SAID PREMISES TO BE SURVEYED AND PLATTED INTO LOTS, BLOCKS, STREETS AND EASEMENTS AS SHOWN ON SAID ANNEXED PLAT, WHICH SAID ANNEXED PLAT REPRESENTS A CAREFUL SURVEY OF ALL PROPERTY CONTAINED AND INCLUDED THEREIN AND IS HEREBY ADOPTED AS THE PLAT OF SAID LAND UNDER THE NAME OF CHIMNEY HILL V, AN ADDITION TO THE CITY OF EDMOND, OKLAHOMA COUNTY, OKLAHOMA.

THE UNDERSIGNED DOES HEREBY CERTIFY THAT IT IS THE OWNER OF THE LAND AND THE ONLY PARTNERSHIP, CORPORATION, PERSON OR ENTITY HAVING ANY RIGHT, TITLE OR INTEREST IN AND TO THE LAND INCLUDED IN SAID ANNEXED PLAT, EXCEPT AS SET FORTH IN THE BONDED ABSTRACTER'S CERTIFICATE, AND DOES HEREBY DEDICATE ALL STREETS, PARKS AND EASEMENTS SHOWN ON SAID PLAT TO THE USE OF THE PUBLIC AS PUBLIC HIGHWAYS AND STREETS, PARKS AND UTILITY EASEMENTS FOR ITSELF, ITS SUCCESSORS AND ASSIGNS FOREVER, AND HAS CAUSED THE SAME TO BE RELEASED FROM ANY AND ALL ENCUMBRANCES SO THAT TITLE IS CLEAR AS TO SAID STREETS, PARKS AND EASEMENTS.

THE OWNER'S RESTRICTIVE COVENANTS AND LIMITATIONS FOR THE DEVELOPMENT OF THIS ADDITION ARE SET OUT ON TYPED WRITTEN SHEETS OF PAPER AND WILL BE SUBSEQUENTLY FILED SEPARATELY.

IN WITNESS WHEREOF THE UNDERSIGNED HAS EXECUTED THIS INSTRUMENT AT OKLAHOMA CITY, OKLAHOMA COUNTY, OKLAHOMA, ON THIS 10th DAY OF May, 1989.

WITNESS:  
Richard N. Coyle  
RICHARD N. COYLE, PARTNER

STATE OF OKLAHOMA ) SS  
COUNTY OF OKLAHOMA )  
SUBSCRIBED AND SWORN TO BY RICHARD N. COYLE, PARTNER, BEFORE ME, A NOTARY PUBLIC IN AND FOR SAID COUNTY AND STATE, ON THIS 10th DAY OF May, 1989, ON BEHALF OF J. W. COYLE ENTERPRISES, A PARTNERSHIP.  
MY COMMISSION EXPIRES:  
December 10, 1989

J. W. COYLE ENTERPRISES  
Richard N. Coyle  
RICHARD N. COYLE, PARTNER  
D. M. Holmes  
NOTARY PUBLIC

**BONDED ABSTRACTER'S CERTIFICATE**

THE UNDERSIGNED, DULY QUALIFIED ABSTRACTER IN AND FOR THE COUNTY OF OKLAHOMA, STATE OF OKLAHOMA, HEREBY CERTIFIES THAT ACCORDING TO THE RECORDS OF SAID COUNTY THE TITLE TO THE LAND SHOWN ON THE ANNEXED PLAT OF CHIMNEY HILL V, AN ADDITION TO THE CITY OF EDMOND, BEING A SUBDIVISION IN THE SOUTH-EAST QUARTER (SE/4) OF SECTION 31, TOWNSHIP 14 NORTH, RANGE 2 WEST OF THE INDIAN MERIDIAN, OKLAHOMA COUNTY, OKLAHOMA, APPEARS TO BE VESTED IN J. W. COYLE ENTERPRISES, A LIMITED PARTNERSHIP, ON THE 10th DAY OF May, 1989, UNENCUMBERED BY PENDING ACTIONS, JUDGMENTS, LIENS, MORTGAGES, TAXES OR OTHER ENCUMBRANCES, EXCEPT EASEMENTS, RIGHTS-OF-WAY, OIL AND GAS LEASES, AND GENERAL MORTGAGES OF RECORD.

ATTEST:  
Jarri Parrish  
ASSISTANT SECRETARY  
STATE OF OKLAHOMA ) SS  
COUNTY OF OKLAHOMA )

AMERICAN GUARANTY TITLE COMPANY  
BY: Don Plank  
VICE PRESIDENT

THE FOREGOING INSTRUMENT WAS ACKNOWLEDGED BEFORE ME THIS 12th DAY OF May, 1989, BY Don Plank, VICE PRESIDENT OF AMERICAN GUARANTY TITLE COMPANY, AN OKLAHOMA CORPORATION, ON BEHALF OF THE CORPORATION.

MY COMMISSION EXPIRES:  
9-1-90

Hennyette Ogden  
NOTARY PUBLIC

**ACCEPTANCE OF DEDICATIONS AND APPROVAL OF PLAT**

BE IT HEREBY RESOLVED BY THE COUNCIL OF THE CITY OF EDMOND, OKLAHOMA, THAT THE PLAT OF CHIMNEY HILL V, AN ADDITION TO THE CITY OF EDMOND, OKLAHOMA COUNTY, OKLAHOMA, IS HEREBY APPROVED AND THE DEDICATIONS SHOWN THEREON ARE HEREBY APPROVED AND ACCEPTED.

ADOPTED BY THE COUNCIL OF THE CITY OF EDMOND, OKLAHOMA, THIS 12th DAY OF JUNE, 1989.

ATTEST:  
Patsy Sandefur  
CITY CLERK

Paul Walters  
MAYOR

**PLANNING COMMISSION APPROVAL**

I, JACK HUGHES, CHAIRMAN OF THE PLANNING COMMISSION OF THE CITY OF EDMOND, OKLAHOMA, DO HEREBY CERTIFY THAT THE SAID PLANNING COMMISSION DULY APPROVED THE ANNEXED PLAT OF CHIMNEY HILL V, AN ADDITION TO THE CITY OF EDMOND, OKLAHOMA, ON THE 15th DAY OF NOVEMBER, 1988.

Jack Hughes  
PLANNING COMMISSION CHAIRMAN

**CITY CLERK'S CERTIFICATE**

I, PATSY SANDEFUR, CITY CLERK OF THE CITY OF EDMOND, OKLAHOMA, HEREBY CERTIFY THAT I HAVE EXAMINED THE RECORDS OF SAID CITY AND FIND ALL DEFERRED PAYMENTS OR UNMATURED INSTALLMENTS UPON SPECIAL ASSESSMENTS HAVE BEEN PAID IN FULL AND THAT THERE IS NO SPECIAL ASSESSMENT PROCEDURE NOW PENDING AGAINST THE LAND SHOWN ON THE ANNEXED MAP OF PLAT OF CHIMNEY HILL V, AN ADDITION TO THE CITY OF EDMOND, OKLAHOMA COUNTY, OKLAHOMA, THIS 12th DAY OF JUNE, 1989.

Patsy Sandefur  
CITY CLERK

**Phillips & Stong**  
Consulting Engineers and Land Surveyors  
1405 751-1463  
9636 N MAY AVENUE SUITE 274 OKLA CITY, OKLA 73120-2714

