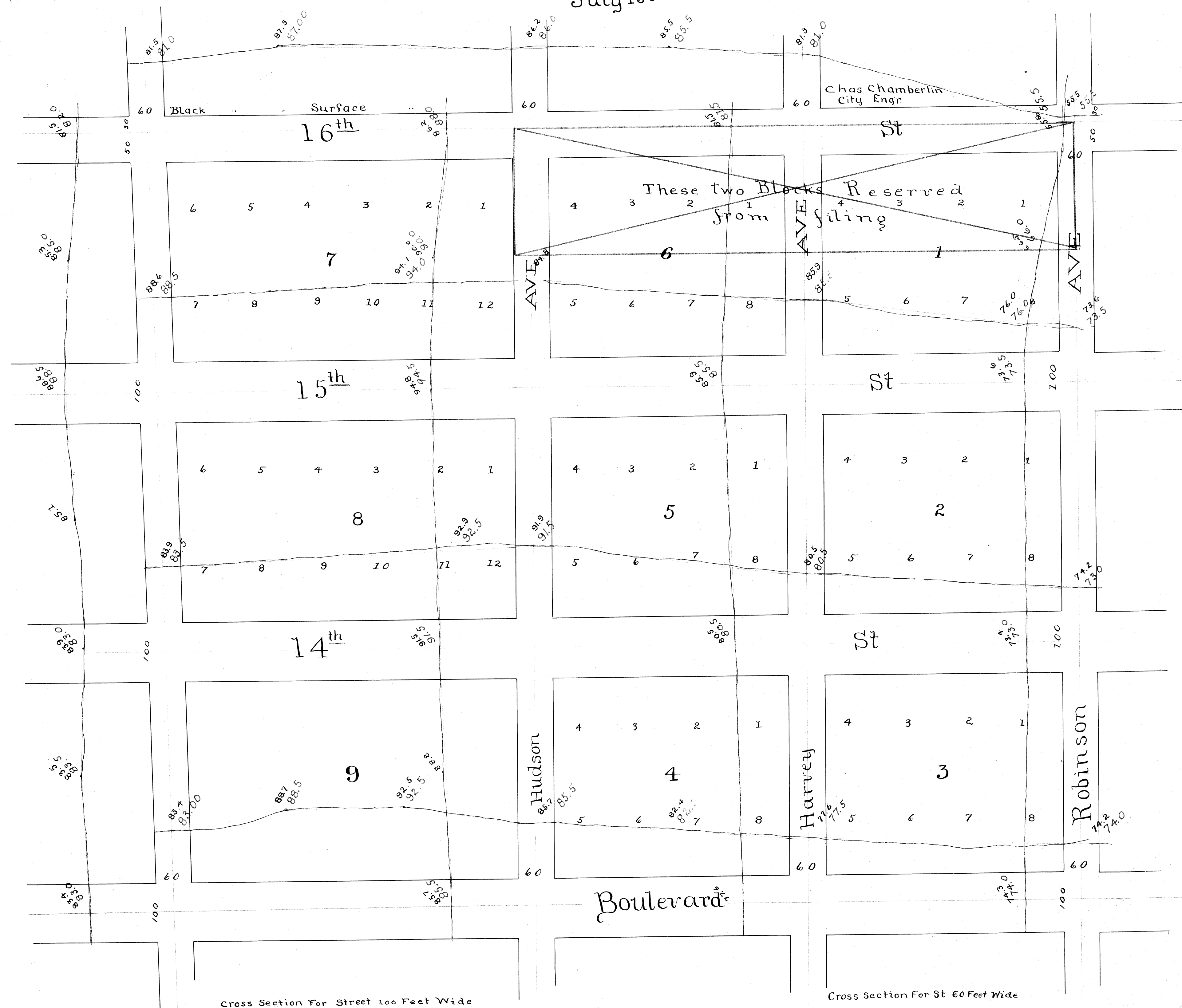


2/8

Profile and Grade Plat  
of CLASSENS  
Highland Park Addition to  
Oklahoma City  
Being part of North 1/2 of South East 1/4  
of Section 28 Town 12 North of Range 5 West.  
July 1900



Cross Section For Street 100 Feet Wide

Cross Section For St 60 Feet Wide

The above is a supplemental plat showing  
grade lines of the Avenues and Streets in  
ClasSENS addition, called Highland Parked.  
addition to Oklahoma City

October 26  
5

C. J. Bowman

Scale Hor - one inch = 25 Feet  
Ver " " " 40 inches

Scale Hor - one inch = 25 Feet  
Ver " " " 40 inches

2/8