

7/9  
1002

7/9

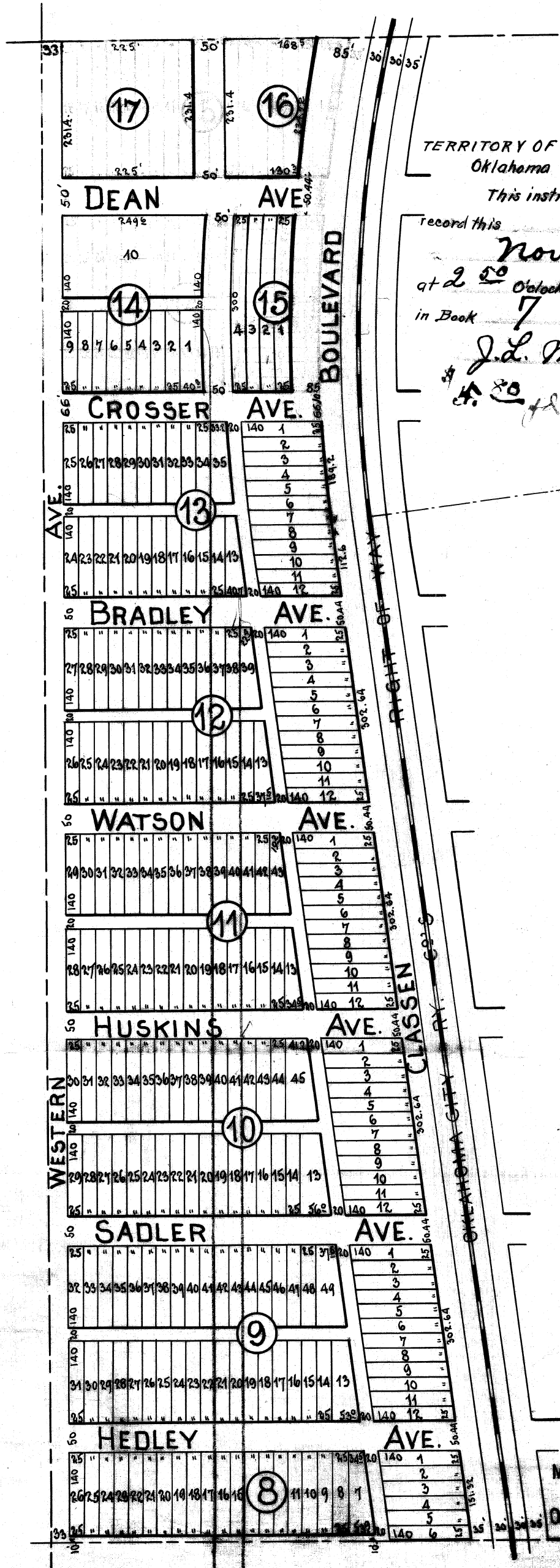
# COLONIAL HEIGHTS

BEING PART OF

N.W. 1/4 SEC. 4, T.12 N. R.3 W.

LAYING WEST OF O.C.R.Y.

SCALE: 1 INCH = 200 FT.



TERRITORY OF OKLAHOMA, }  
Oklahoma County, }

This instrument was filed for

record this 11 day of

Nov A.D. 1907

at 2:50 o'clock P. M. and recorded

in Book 7 page 9

J. L. Mitch

Register of Deeds

(Seal) 11-177

MOORE & McCLURE  
Civil Engineers  
OKLAHOMA CITY, OK  
8-23-07

131

9

