

AMENDED PLAT
OF
Lots 37 thru 62, incl., in Block 1 and Lots 37 thru 63, incl., in Block 2 and Lots 1 thru 21, incl., in Block 3
and
A part of Block 4

CONTINENTAL SQUARE ADDITION
A part of the Southwest Quarter of Section 3, T. 11 N., R. 2 W., I. M.
Midwest City, Oklahoma County, Oklahoma

OWNERS CERTIFICATION AND DEDICATION

KNOW ALL MEN BY THESE PRESENTS:

That Crystal J. Hobson, certifies that she is the owner of all the land included in the annexed plat and she is the only person or persons having any right, title or interest to the land shown and known as Amended Plat of Lots 37 thru 62, inclusive, in Block 1 and Lots 37 thru 63, inclusive, in Block 2 and Lots 1 thru 21, inclusive, in Block 3 and a part of Block 4, Continental Square Addition, an addition to the City of Midwest City, Oklahoma County, Oklahoma, and that the plat represents a survey of the above described property made with her consent and that she hereby dedicates to the public use all the streets shown on said annexed plat, that the easements shown on the annexed plat are created for the installation and maintenance of public utilities, that she hereby guarantees a clear title to all of the land so dedicated from her, her heirs and assigns forever and have caused the same to be released from all encumbrances so that the title is clear, except as shown in the Abstracters Certificate. Covenants, Restrictions and Reservations for the addition are contained in a separate instrument and will be filed subsequently.

Witness my hand this 25th day of February, 1992.

Crystal J. Hobson
 Crystal J. Hobson

OWNERS NOTARY

State of Oklahoma } SS
 County of Oklahoma }

Before me, the undersigned, a Notary Public in and for said County and State on the 25th day of February, 1992, personally appeared Crystal J. Hobson known to be the identical person who signed the name of the maker to the within and foregoing instrument and acknowledged to me that she executed the same as her free and voluntary act and deed, for the uses and purposes therein set forth.

Given under my hand and seal, the day and year last above written.

My Commission expires:

Crystal J. Hobson
 Notary Public

SURVEYORS CERTIFICATE

I, James S. Yager, do hereby state that I am by profession, a Registered Land Surveyor and that the annexed plat of Amended Plat of Lots 37 thru 62, inclusive, in Block 1 and Lots 37 thru 63, inclusive, in Block 2 and Lots 1 thru 21, inclusive, in Block 3 and a part of Block 4, Continental Square Addition, an addition to the City of Midwest City, Oklahoma County, Oklahoma, represents a survey made by me on the 24th day of February, 1992.

SURVEYORS NOTARY

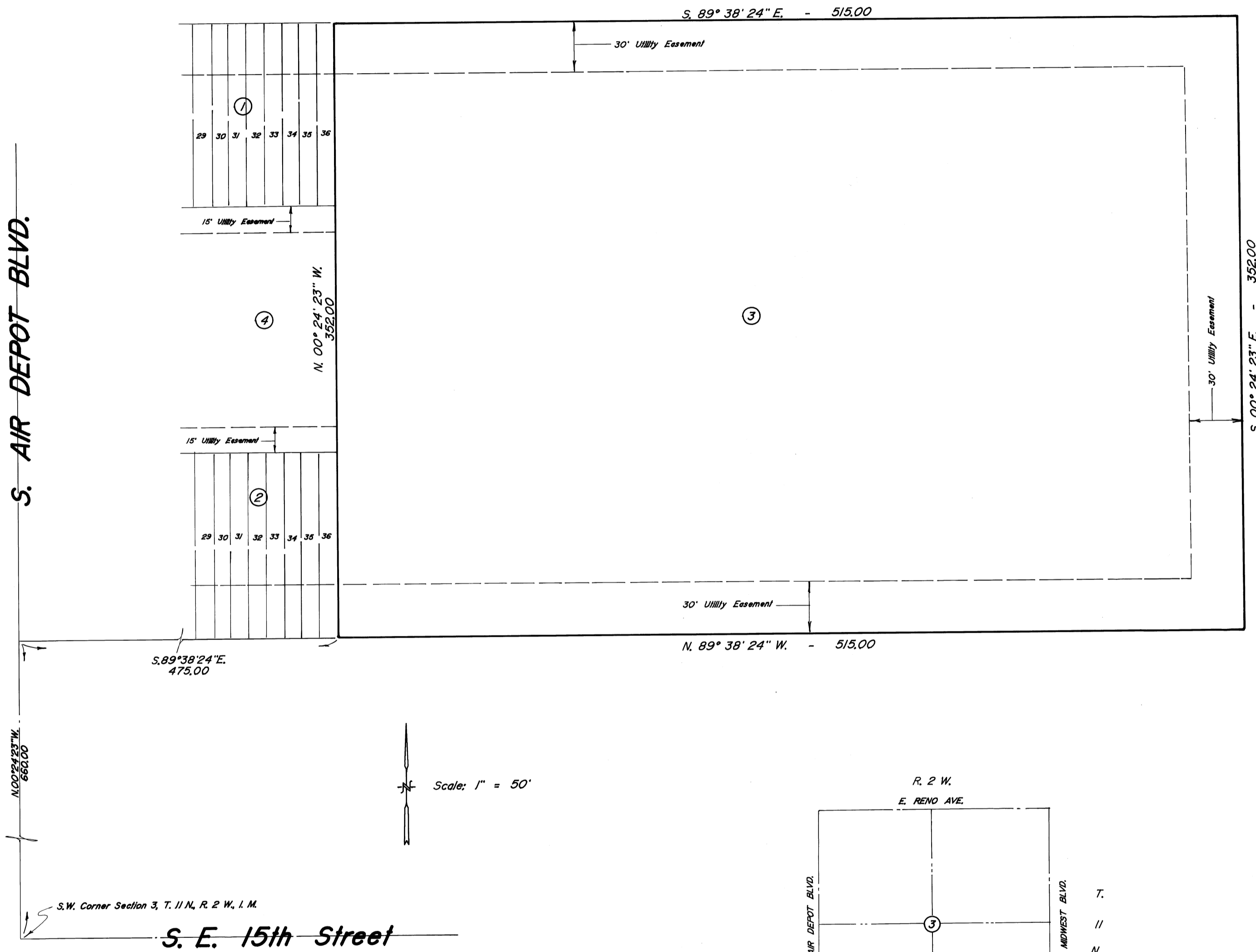
State of Oklahoma } SS
 County of Oklahoma }

Before me, the undersigned, a Notary Public in and for said County and State, on this 25th day of FEB., 1992, personally appeared James S. Yager, to me known to be the identical person who executed the within and foregoing instrument and acknowledged to me that he executed the same as his free and voluntary act and deed for the uses and purposes set forth.

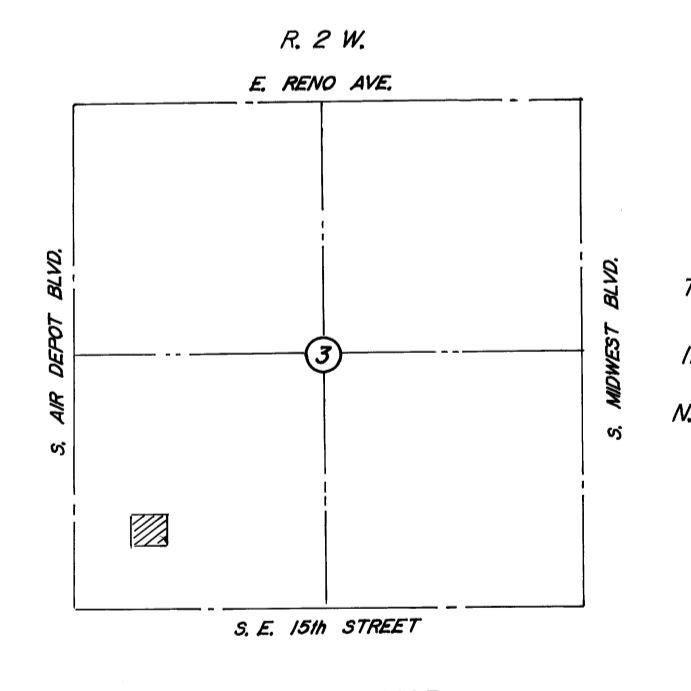
Given under my hand and seal the day and year last above written.

My Commission expires:

5-16-93
Melody J. Cole
 Notary Public



Scale: 1" = 50'



BONDED ABSTRACTERS CERTIFICATE

The undersigned, duly qualified and lawfully Bonded Abstracter of Title in and for the County of Oklahoma and State of Oklahoma, hereby certify that the records of said County show the title to the land shown on the annexed plat of Amended Plat of Lots 37 thru 62, inclusive, in Block 1 and Lots 37 thru 63, inclusive, in Block 2 and Lots 1 thru 21, inclusive, in Block 3 and a part of Block 4, Continental Square Addition, an addition to the City of Midwest City, Oklahoma County, Oklahoma, is vested in Crystal J. Hobson, and that on the 27th day of March, 1992, there are no actions or judgments of any nature, in any court or on the records with the Clerk of any court in said County and State, against said land and no Tax Deeds are issued to person or persons, and that there are no Leins, Mortgages or encumbrances of any kind against the land described on the annexed plat; except oil and gas leases, easements, and mortgages of record, and except mineral rights previously reserved or conveyed, judgement liens and actions or judgments of any nature in any court in said County and State of record.

Signed and sealed this 27th day of March, 1992.

Ronny White
 Assistant Secretary

Glenn
 Vice President

COUNTY TREASURERS CERTIFICATE

I, Joe B. Barnes, do hereby certify that I am duly elected, qualified and acting County Treasurer of Oklahoma County, State of Oklahoma and that the Tax Records of the County, show all taxes are paid for the year of 1991 and prior years on the land shown on the annexed plat of Amended Plat of Lots 37 thru 62, inclusive, in Block 1 and Lots 37 thru 63, inclusive, in Block 2 and Lots 1 thru 21, inclusive, in Block 3 and a part of Block 4, Continental Square Addition, an addition to the City of Midwest City, Oklahoma County, Oklahoma and that the required statutory security has been deposited in the office of the County Treasurer, guaranteeing payment of the current year taxes.

In witness whereof said County Treasurer has caused this instrument to be executed this 16th day of April, 1992.

Shirley Howard
 Chief Deputy

CITY CLERKS CERTIFICATE

I, Tommy Melton, City Clerk of the City of Midwest City, hereby certify that I have examined the records of said city and find all deferred payments or unmatured installments upon special assessments have been paid in full and that there are no special assessments procedure now pending against the land shown on the annexed plat of Amended Plat of Lots 37 thru 62, inclusive, in Block 1 and Lots 37 thru 63, inclusive, in Block 2 and Lots 1 thru 21, inclusive, in Block 3 and a part of Block 4, Continental Square Addition, an addition to the City of Midwest City, Oklahoma County, Oklahoma, on this 11th day of March, 1992.

Tommy Melton
 City Clerk

CITY PLANNING COMMISSION APPROVAL

PLANNING COMMISSION APPROVAL: I, Lydia Heimer Lee, Chairman/Secretary of the Planning Commission for the City of Midwest City, State of Oklahoma, hereby certify that the said Commission duly approved the annexed plat of Amended Plat of Lots 37 thru 62, inclusive, in Block 1 and Lots 37 thru 63, inclusive, in Block 2 and Lots 1 thru 21, inclusive, in Block 3 and a part of Block 4, Continental Square Addition, an addition to the City of Midwest City, Oklahoma County, Oklahoma, on this 30th day of March, 1992.

Lydia Heimer Lee
 Chairman/Secretary

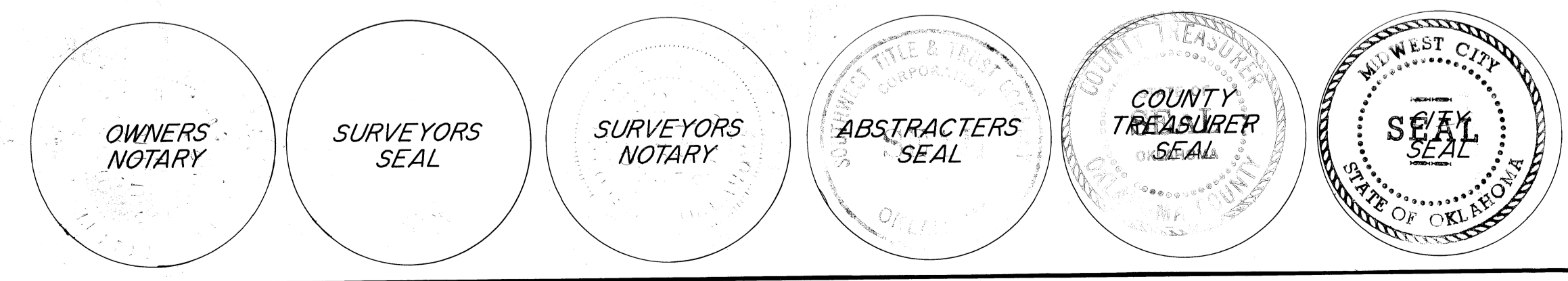
ACCEPTANCE OF DEDICATION BY CITY COUNCIL

ACCEPTANCE OF DEDICATION BY CITY COUNCIL: Be it, resolved by the City Council of the City of Midwest City, that the dedication shown on the annexed plat of Amended Plat of Lots 37 thru 62, inclusive, in Block 1 and Lots 37 thru 63, inclusive, in Block 2 and Lots 1 thru 21, inclusive, in Block 3 and a part of Block 4, Continental Square Addition, an addition to the City of Midwest City, Oklahoma County, Oklahoma, are hereby accepted.

Adopted by the City Council of the City of Midwest City, this 10th day of March, 1992.

Tommy Melton
 City Clerk

John G. Johnson
 Mayor



54/13