

13/27

23

13  
27

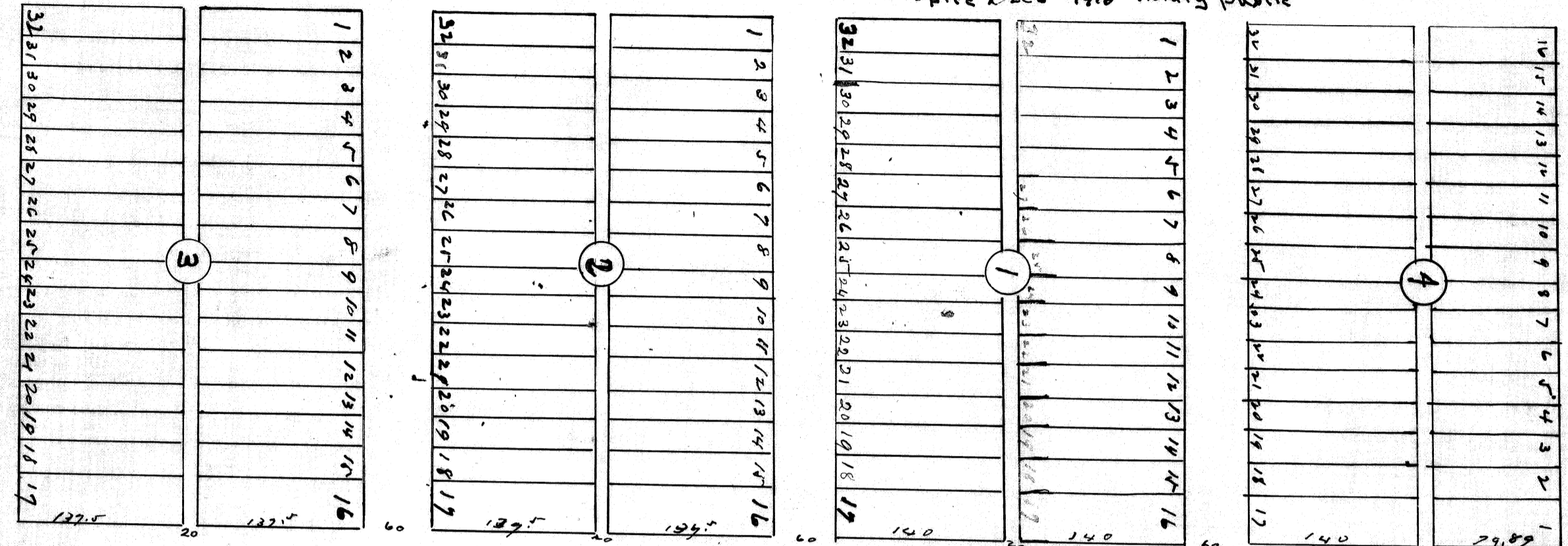
I. D.B. Merry

ENGINEERS CERTIFICATE

herely certify that I am a Civil Engineer and that I have platted the South Half of Block 15 and all of Blocks 16 and 17 Adels Heights, Okla. City, Okla. into subdivisions as shown herein. And the plat map is a correct representation of said Blocks - subdivided into Broadway Heights, as shown by the recorded plat thereof.

Subscribed and sworn to before me I. N. Phillips, a Notary Public in and for Oklahoma County, Okla. this 2nd day of Nov. 1909. I. N. Phillips My Commission Expires Dec 6th 1910

29  
Jan 2 10  
Boscha 12 ft  
Se Coater



East Broadway Heights  
Being a subdivision of Adels Heights  
Blocks 15 and 17 and South half  
of 16 as shown by the  
recorded Plat thereof

Know all men by these presents that W. J. Carpenter and Jessie Carpenter, husband and wife being owners of the following real estate in Oklahoma Co Oklahoma, Being a subdivision of the South half of Block Fifteen (15) and all of Blocks sixteen (16) and Seventeen (17) in Adels Heights to Oklahoma City Oklahoma as shown by the recorded Plat thereof. We have caused the same to be subdivided in Blocks and lots with streets and alleys as shown by the plat hereunto which we hereby designate as East Broadway Heights Addition to Oklahoma City Oklahoma and do hereby dedicate the streets and alleys as shown by the annexed plat, to the Public use. We hereby certify that the above map is a correct representation of the above described plots as subdivided into blocks, streets, alleys & lots. Witness our hand this 2nd day of November 1909.

Subscribed and sworn to 2nd day of Nov. 1909  
before me I. N. Phillips a Notary Public in and for  
Oklahoma County, Okla. my Commission Expires Dec 6th 1910  
W. J. Carpenter  
Jessie Carpenter  
I. N. Phillips  
Notary Public

13/27