

OWNER'S CERTIFICATE AND DEDICATION
KNOW ALL MEN BY THESE PRESENTS:

That we, the undersigned, Pugh and Pugh Builders, Inc., a corporation, are the separate owners of all the property contained and included in the annexed plat of ELWOOD HEIGHTS a subdivision of a part of the S.E. 1/4, Section 2, T-13-N, R-3-W, I.M. to the City of Edmond, Oklahoma and have caused the said premises to be surveyed and platted into Lots, Blocks, Streets, and Easements, as shown on said annexed plat, which said annexed plat represents a correct survey of all property included therein and is hereby adopted as the plat of said land under the name of ELWOOD HEIGHTS.

Pugh and Pugh Builders, Inc., a corporation, does hereby certify that they are the separate owners of and the only person or persons, corporation or corporations, who have any right, title, or interest in and to the land included in the above mentioned annexed plat, and the said persons herein named do hereby dedicate all streets and easements shown on said annexed plat to the use of the public for public highways, streets and utility easements, for themselves, their successors and assigns forever, and have caused the same to be released from all rights, easements and encumbrances except as set forth in the Bonded Abstracters Certificate.

The property covered by said plat and the dedication is subject to certain restrictions, reservations and covenants contained in a separate instrument which is dated this 9th day of November, 1961, and filed for record simultaneously herewith. Pugh and Pugh Builders, Inc., a corporation, does hereby adopt and ratify said restrictions, reservations and covenants for the benefit of itself and its successors in title and does impose the said restrictions and reservations on the entire plat of ELWOOD HEIGHTS, to which it shall be encumbered upon its successors in title to adhere.

IN WITNESS WHEREOF, the undersigned have caused this instrument to be executed this 9th day of November, 1961.

ATTEST:

PUGH AND PUGH BUILDERS, INC.
a corporation

Maudie Pugh
Secretary

Elwood Pugh
President

STATE OF OKLAHOMA S.S.:
COUNTY OF OKLAHOMA

Before me, the undersigned, a Notary Public in and for said County and State, on this the 9th day of November, 1961, personally appeared Elwood Pugh to me known to be the identical person who signed the name of Pugh and Pugh Builders, Inc., a corporation, as President of said corporation, and acknowledged to me that he executed the same as his free and voluntary act and deed and as the free and voluntary act and deed of said corporation for the uses and purposes therein set forth.

Given under my hand and seal the day and year last above written.
My Commission expires: Oct. 24, 1964

Ronald C. Bowen
Notary Public

STATE OF OKLAHOMA S.S.
COUNTY OF OKLAHOMA

BONDED ABSTRACTER'S
CERTIFICATE

The undersigned, duly qualified abstractor in and for said County and State, hereby certifies that, according to the records of said County, title to the land shown on the annexed plat of ELWOOD HEIGHTS a subdivision of a part of the S.E. 1/4, Section 2, T-13-N, R-3-W, I.M., to the City of Edmond, Oklahoma appears to be vested in Pugh and Pugh Builders, Inc., a corporation on the 3rd day of April, 1962, unencumbered by pending actions, judgements, liens, mortgages, taxes or other encumbrances, except: Mortgage in Book 2684, page 279; An undivided 1/2 interest and to all of the oil, gas and other minerals reserved in Deed book 2681, page 242.

Executed this 3rd day of April, 1962.

CAPITOL ABSTRACT & TITLE CO.

By W. Cox
President

ATTEST: M. Cox
Secretary

CERTIFICATE OF CITY CLERK

I, W.B. Bryan, City Clerk of the City of Edmond, Oklahoma, hereby certify that I have examined the records of said City and find that all deferred payments on unimproved lots upon special assessments have been paid in full and that there are no special assessments procedures now pending against the land shown on the annexed plat of ELWOOD HEIGHTS a subdivision of a part of the S.E. 1/4, Section 2, T-13-N, R-3-W, I.M., to the City of Edmond, Oklahoma.

Signed by the City Clerk on this 16th day of November, 1961.

W.B. Bryan
City Clerk

ACCEPTANCE OF DEDICATIONS BY CITY COUNCIL

Be it resolved by the Council of the City of Edmond, Oklahoma, that the dedications shown on the annexed plat of ELWOOD HEIGHTS a subdivision of a part of the S.E. 1/4, Section 2, T-13-N, R-3-W, I.M., to the City of Edmond, Oklahoma are hereby accepted.

Adopted by the Council of the City of Edmond, Oklahoma this 6th day of November, 1961.
Approved by the Mayor of the City of Edmond, Oklahoma this 16th day of November, 1961.

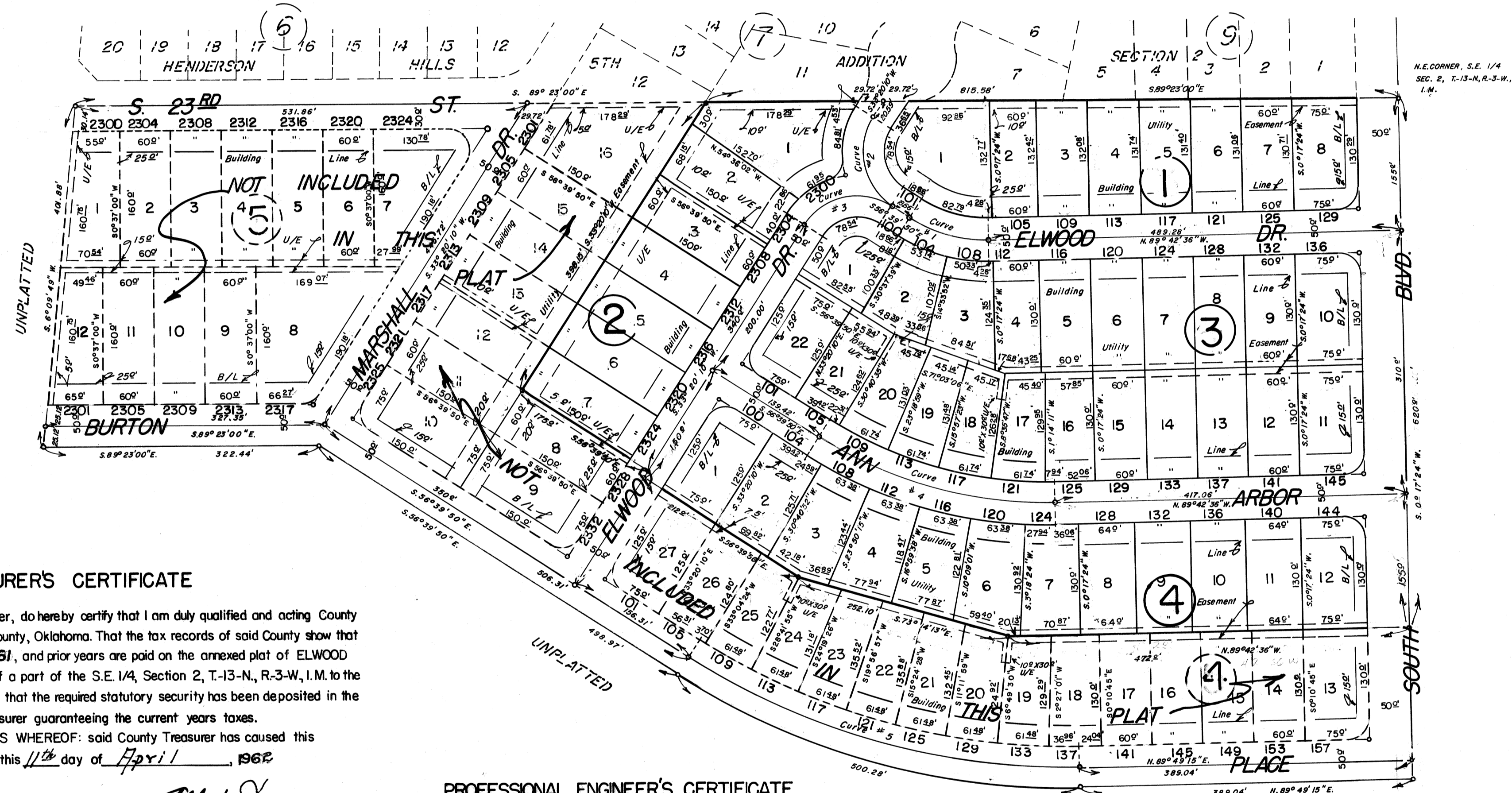
ATTEST: W.B. Bryan
City Clerk

W. Carter Service
Mayor

ELWOOD HEIGHTS

A SUBDIVISION OF A PART OF THE S.E. 1/4, SECTION 2, T-13-N, R-3-W, I.M.

OKLAHOMA COUNTY, OKLAHOMA



COUNTY TREASURER'S CERTIFICATE

I, Albert Dyer, do hereby certify that I am duly qualified and acting County Treasurer of Oklahoma County, Oklahoma. That the tax records of said County show that all taxes for the year 1961, and prior years are paid on the annexed plat of ELWOOD HEIGHTS a subdivision of a part of the S.E. 1/4, Section 2, T-13-N, R-3-W, I.M. to the City of Edmond, Oklahoma, that the required statutory security has been deposited in the office of the County Treasurer guaranteeing the current years taxes.

IN WITNESS WHEREOF: said County Treasurer has caused this instrument to be executed this 11th day of April, 1962.

Albert Dyer
County Treasurer
By: J. Blackwell
Chief Deputy

CITY PLANNING COMMISSION APPROVAL

I, E.C. Hall, of the City Planning Commission of the City of Edmond, Oklahoma, hereby certify that the said Planning Commission duly approved the final record plat of ELWOOD HEIGHTS a subdivision of a part of the S.E. 1/4, Section 2, T-13-N, R-3-W, I.M. to the City of Edmond, Oklahoma, at a meeting on the 30th day of October, 1961.

E.C. Hall
Chairman

PROFESSIONAL ENGINEER'S CERTIFICATE

I, Harry F. Hulett, Jr., a Registered Professional Engineer in the State of Oklahoma, hereby certify that the annexed plat consisting of 1 sheet correctly represents a survey made under my supervision on the 3rd day of April, 1962. Boundary monuments shown thereon have been correctly and accurately placed and exist in the positions so shown.

Harry F. Hulett, Jr.
Harry F. Hulett, Jr.

STATE OF OKLAHOMA S.S.
COUNTY OF OKLAHOMA

Before me, the undersigned, a Notary Public in and for said County and State on this 3rd day of April, 1962 personally appeared Harry F. Hulett, Jr. to me known to be the identical person who executed the within and foregoing instrument and acknowledged to me that he executed the same as his free and voluntary act and deed for the uses and purposes therein set forth.

Given under my hand and seal the day and year last above written.
My Commission Expires: Oct. 24, 1964

Ronald C. Bowen
Notary Public

CURVE DATA				
Curve No.	T	R	L	A
1	50.00'	168.55'	97.21'	33° 02' 46"
2	75.00'	75.00'	117.81'	90° 00' 00"
3	75.00'	75.00'	117.81'	90° 00' 00"
4	150.00'	505.64'	291.64'	33° 02' 46"

NOTE: All corner lots have 250' radius unless otherwise noted.

SCALE 1"=100'

PREPARED BY
HARRY F. HULETT, JR.
REGISTERED PROFESSIONAL CIVIL ENGINEER
5121 N. Shartel
VI 3- O453
Oklahoma City, Oklahoma