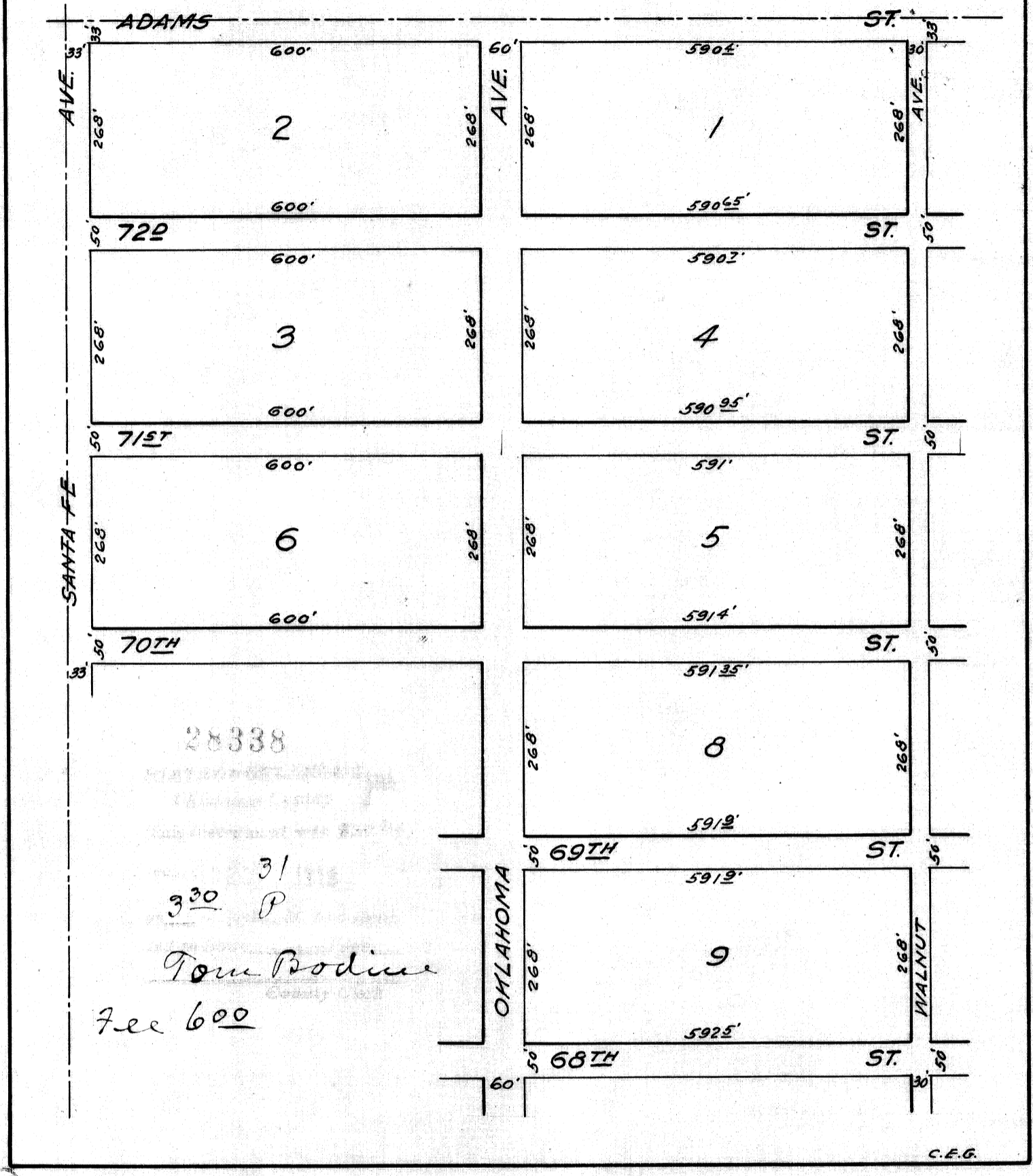


DRAWING NUMBER  
**19/3**

1 of 2

PLAN HCLD CORPORATION • IRVINE, CALIFORNIA  
REORDER BY NUMBER 075AR  
POSITION EDGE OF PRINT ON THIS LINE

**AMENDED PLAT OF  
BLOCKS 1, 2, 3, 4, 5, 6, 8, & 9,  
① E.M. CRUM'S ADD.  
TO OKLAHOMA CITY.**  
SCALE 1"=200'



W/16  
②

AMENDED PLAT OF BLOCKS ONE, TWO, THREE, FOUR,  
FIVE, SIX, EIGHT AND NINE OF E. M.  
CRUM'S ADDITION TO OKLAHOMA  
C I T Y.

KNOW ALL MEN BY THESE PRESENTS:

That David McKinstry being the sole owner of  
Blocks One (1), Two (2), Three (3), Four (4), Five (5),  
Six (6), Eight (8) and Nine (9) all of E. M. Crum's  
Addition to Oklahoma City, as shown in the office of  
County Clerk of Oklahoma County, Oklahoma, recorded in  
Book of Plats, pages ; has caused  
an amended plat to be made of said blocks and the annexed  
plat is a correct representation of said blocks as  
amended.

SIGNED this 31<sup>st</sup> day of December, 1918.

David McKinstry

STATE OF OKLAHOMA )  
                          ) SS.  
OKLAHOMA COUNTY )

Before me, the undersigned, a Notary Public  
in and for said County and State, on this 31<sup>st</sup> day of  
December, 1918, personally appeared David McKinstry to me  
known to be the identical person who executed the within  
and foregoing instrument and who acknowledged to me that  
he executed the same as his free and voluntary act and  
deed for the uses and purposes therein set forth.

WITNESS my hand and notarial seal this 31<sup>st</sup>  
of December, 1918.

Edward  
Notary Public.

My commission expires ~~xxx~~ Nov-4 1920

W