

OWNER'S CERTIFICATE AND DEDICATION

THE UNDERSIGNED, KERR-MCGEE CORPORATION, A DELAWARE CORPORATION, DOES HEREBY CERTIFY THAT IT IS THE OWNER OF THE LEGAL TITLE AND THE ONLY PERSONS, FIRM OR CORPORATION HAVING ANY LEGAL RIGHT, TITLE OR INTEREST IN AND TO THE LANDS SHOWN ON THE ANNEXED PLAT AND DO FURTHER CERTIFY:

1. THAT AS THE OWNER OF THE TITLE TO SAID LANDS WHICH IS SHOWN ON THE ANNEXED PLAT OF FARRIS ADDITION, SECTION 2, A SUBDIVISION OF A PART OF THE NE 1/4, NW 1/4, SECTION 23, T 12 N, R 2 W, I.M., SPENCER, OKLAHOMA COUNTY, OKLAHOMA HEREBY DEDICATES THE STREETS AND AVENUES SHOWN ON SAID PLAT FOR THE USE OF THE PUBLIC AND ITS SUCCESSORS AND ASSIGNS; GUARANTEES A CLEAR TITLE TO SAID LAND AND HAS CAUSED THE SAME TO BE RELEASED OF ALL ENCUMBRANCES SO THAT THE TITLE IS CLEAR EXCEPT FOR MINERAL RESERVATIONS AND RIGHTS OF WAY OF RECORD.

2. THAT THE AREAS INDICATED ON SAID PLAT AS "UTILITY EASEMENTS" ARE HEREBY RESERVED FOR THE PURPOSE OF LOCATING, CONSTRUCTING, ERECTING, MAINTAINING, CONDUCTING AND PERFORMING ANY PUBLIC OR QUASI-PUBLIC UTILITY OR UTILITY FUNCTION OR SERVICE ABOVE OR BENEATH THE SURFACE OF THE GROUND, WITH RIGHTS OF INGRESS AND EGRESS AT ANY TIME FOR THE PURPOSE OF INSTALLATION, REPAIR, MAINTENANCE, OPERATION AND REMOVAL OF ANY SUCH PUBLIC OR QUASI-PUBLIC UTILITY.

WITNESS MY HAND THIS 10th DAY OF April 1975, BY: KERR-MCGEE CORPORATION, VICE PRESIDENT, KERR-MCGEE CORPORATION & DELAWARE CORPORATION, ATTEST: Carl D. Ruddy, ASST. SECRETARY

STATE OF OKLAHOMA ) ) ss. COUNTY OF OKLAHOMA )

BEFORE ME, THE UNDERSIGNED, A NOTARY PUBLIC IN AND FOR SAID COUNTY AND STATE ON THIS 10th DAY OF April, 1975, PERSONALLY APPEARED GEORGE H. COBB, VICE PRESIDENT, KERR-MCGEE CORP., A DELAWARE CORP., TO ME KNOWN TO BE THE IDENTICAL PERSON WHO SUBSCRIBED THE NAME OF THE MAKER THEREOF TO THE ABOVE AND FOREGOING INSTRUMENT AND ACKNOWLEDGED TO ME THAT HE EXECUTED THE SAME AS HIS FREE AND VOLUNTARY ACT AND DEED FOR THE USE AND PURPOSES THEREIN SET FORTH.

WITNESS MY HAND AND SEAL THE DAY AND YEAR LAST WRITTEN ABOVE. MY COMMISSION EXPIRES: June 7, 1978, Lana Gray

BONDED ABSTRACTER'S CERTIFICATE

STATE OF OKLAHOMA ) ) ss. COUNTY OF OKLAHOMA )

THE UNDERSIGNED, A DULY QUALIFIED ABSTRACTER IN AND FOR SAID COUNTY AND STATE, CERTIFIES THAT ACCORDING TO THE RECORDS OF SAID COUNTY, TITLE TO THE LAND SHOWN ON THE ANNEXED MAP OR PLAT OF FARRIS ADDITION, SECTION 2, A SUBDIVISION OF A PART OF THE NE 1/4, NW 1/4, SECTION 23, T 12 N, R 2 W, I.M., SPENCER, OKLAHOMA COUNTY, OKLAHOMA APPEARS TO BE VESTED IN KERR-MCGEE CORPORATION, A DELAWARE CORPORATION, ON THIS 10th DAY OF April, 1975, UNENCUMBERED BY PENDING ACTIONS, JUDGEMENTS, LIENS, MORTGAGES, TAXES OR OTHER ENCUMBRANCES, EXCEPT MINERAL RESERVATIONS, RIGHTS OF WAY AND MORTGAGES OF RECORD.

EXECUTED THIS 10th DAY OF April, 1975, SOUTHWEST TITLE AND TRUST COMPANY, BY: Don J. Reed, Vice President

SURVEYOR'S CERTIFICATE

I, FRANK P. PIERCE, A REGISTERED LAND SURVEYOR, DO HEREBY CERTIFY THAT THE ANNEXED PLAT OF FARRIS ADDITION, SECTION 2, A SUBDIVISION OF A PART OF THE NE 1/4, NW 1/4, SECTION 23, T 12 N, R 2 W, I.M., SPENCER, OKLAHOMA COUNTY, OKLAHOMA, CORRECTLY REPRESENTS AN ACCURATE SURVEY THEREOF MADE UNDER MY SUPERVISION AND THAT THE MONUMENTS SHOWN THEREON ACTUALLY EXIST AND THEIR POSITIONS ARE CORRECTLY SHOWN.

Frank P. Pierce, FRANK P. PIERCE, REGISTERED LAND SURVEYOR

STATE OF OKLAHOMA ) ) ss. COUNTY OF OKLAHOMA )

BEFORE ME THE UNDERSIGNED, A NOTARY PUBLIC IN AND FOR SAID COUNTY AND STATE ON THIS 7th DAY OF APRIL, 1975, PERSONALLY APPEARED FRANK P. PIERCE, TO ME KNOWN TO BE THE IDENTICAL PERSON WHO EXECUTED THE WITHIN AND FOREGOING INSTRUMENT AND ACKNOWLEDGED TO ME THAT HE EXECUTED THE SAME AS HIS FREE AND VOLUNTARY ACT AND DEED FOR THE USES AND PURPOSES THEREIN SET FORTH.

WITNESS MY HAND AND SEAL THE DAY AND YEAR LAST ABOVE WRITTEN. MY COMMISSION EXPIRES: 7-24-78

Notary Public seal and signature

CITY OF SPENCER APPROVAL

I, JOHN COLEMAN, CHAIRMAN OF THE BOARD, CITY OF SPENCER, OKLAHOMA, DO HEREBY CERTIFY THAT THE SAID CITY COUNCIL OF THE CITY OF SPENCER, OKLAHOMA DULY APPROVED AND ACCEPTED THE ANNEXED PLAT, STREET RIGHTS-OF-WAY, UTILITY EASEMENTS, OF FARRIS ADDITION, SECTION 2 TO SPENCER, OKLAHOMA ON THIS 10th DAY OF April, 1975.

John Coleman, CHAIRMAN OF THE BOARD, City Clerk

SPENCER PLANNING BOARD CERTIFICATION

I, JOHN GWINN, CHAIRMAN OF THE BOARD, CITY OF SPENCER, OKLAHOMA, DO HEREBY CERTIFY THAT THE SAID PLANNING BOARD OF THE CITY OF SPENCER, OKLAHOMA DULY APPROVED AND ACCEPTED THE ANNEXED PLAT, STREET RIGHTS-OF-WAY, UTILITY EASEMENTS OF FARRIS ADDITION, SECTION 2, TO SPENCER, OKLAHOMA ON THIS 10 DAY OF April, 1975.

John Gwinn, CHAIRMAN OF BOARD

COUNTY TREASURER'S CERTIFICATE

I, JACK BLACKWELL, DO HEREBY CERTIFY THAT I AM THE DULY ELECTED, QUALIFIED AND ACTING COUNTY TREASURER OF OKLAHOMA COUNTY, STATE OF OKLAHOMA THAT THE RECORDS OF SAID COUNTY SHOW ALL TAXES ARE PAID FOR THE YEAR 1974 AND ALL PRIOR YEARS ON THE LAND SHOWN ON THE ANNEXED PLAT OF FARRIS ADDITION, SECTION 2, A SUBDIVISION OF A PART OF THE NE 1/4, NW 1/4, SECTION 23, T 12 N, R 2 W, I.M., SPENCER, OKLAHOMA COUNTY, OKLAHOMA, THAT THE REQUIRED STATUTORY SECURITY HAS BEEN DEPOSITED IN THE OFFICE OF THE COUNTY TREASURER GUARANTEEING THE PAYMENT OF THE CURRENT YEARS TAXES.

IN WITNESS WHEREOF, SAID COUNTY TREASURER HAS CAUSED THIS INSTRUMENT TO BE EXECUTED AT OKLAHOMA CITY, OKLAHOMA, THIS 11th DAY OF April, 1975.

Jack Blackwell - COUNTY TREASURER

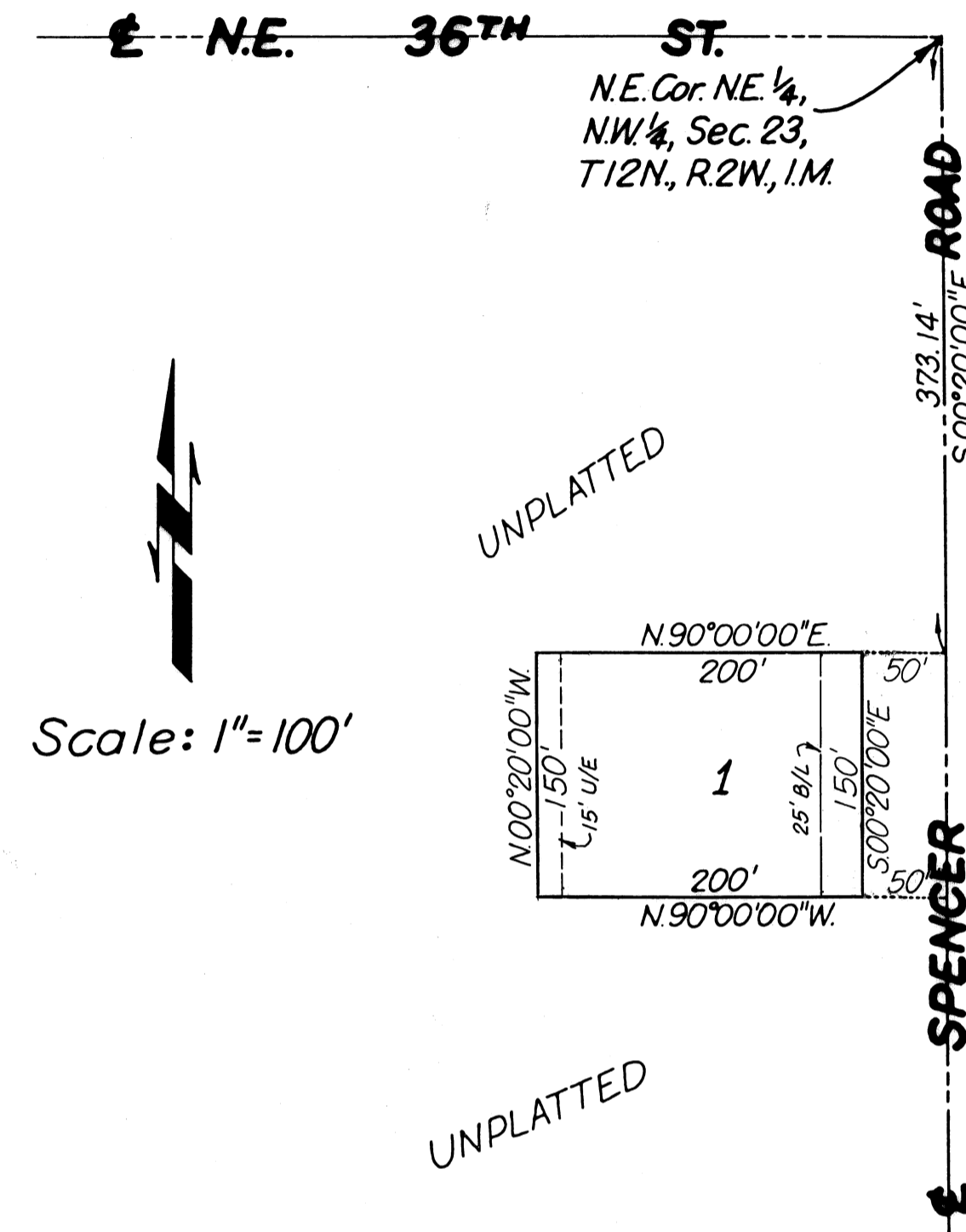
DEPARTMENT OF HEALTH APPROVAL

THE OKLAHOMA STATE DEPARTMENT OF HEALTH CERTIFIES THAT THIS PLAT IS APPROVED FOR THE CONSTRUCTION OF PUBLIC SEWAGE DISPOSAL SYSTEM.

SIGNED: D.C. Williams, RFS, DATE 4-16-75, OKLAHOMA COUNTY HEALTH DEPARTMENT

FARRIS ADDITION SECTION 2

A PART OF THE NE 1/4, NW 1/4, SEC. 23, T.12N., R.2W., I. M. SPENCER, OKLAHOMA COUNTY, OKLAHOMA



Scale: 1"=100'

LEGAL DESCRIPTION

A PART OF THE NE 1/4, NW 1/4, SECTION 23, T 12 N, R 2 W, I. M., SPENCER, OKLAHOMA COUNTY, OKLAHOMA, BEING MORE PARTICULARLY DESCRIBED AS FOLLOWS:

- COMMENCING: AT THE NORTHEAST CORNER OF SAID NE 1/4, NW 1/4, THENCE: S 00°20'00" E ALONG THE EAST LINE OF SAID NE 1/4, NW 1/4, A DISTANCE OF 373.14', THENCE: N 90°00'00" W AND PARALLEL TO THE NORTH LINE OF SAID NE 1/4, NW 1/4, A DISTANCE OF 50.00' TO THE POINT OR PLACE OF BEGINNING; THENCE: S 00°20'00" E AND PARALLEL TO THE EAST LINE OF SAID NE 1/4, NW 1/4, A DISTANCE OF 150.00', THENCE: N 90°00'00" W AND PARALLEL TO THE NORTH LINE OF SAID NE 1/4, NW 1/4, A DISTANCE OF 200.00', THENCE: N 00°20'00" W AND PARALLEL TO THE EAST LINE OF SAID NE 1/4, NW 1/4, A DISTANCE OF 150.00', THENCE: N 90°00'00" E AND PARALLEL TO THE NORTH LINE OF SAID NE 1/4, NW 1/4, A DISTANCE OF 200.00' TO THE POINT OR PLACE OF BEGINNING;

THE ABOVE DESCRIBED TRACT CONTAINS 0.6887 ACRES AND IS SUBJECT TO EASEMENTS AND RIGHTS OF WAY RECORDED OF RECORD.

MAPCO ENGINEERING CORPORATION 2500 S. Broadway 348-0550 Edmond, Oklahoma 73034

Handwritten: 45/20

Handwritten: 45/20