

# FROLICH MEADOWS ESTATES BLOCKS 15-18 INCL.

A PART OF THE SW 1/4, SECTION 21, T11N, R2W, I.M.  
OKLAHOMA CITY, OKLAHOMA COUNTY, OKLAHOMA

### OWNER'S CERTIFICATE AND DEDICATION

KNOW ALL MEN BY THESE PRESENTS: THAT SOUTHWEST TITLE & TRUST COMPANY, AN OKLAHOMA CORPORATION, DOES HEREBY CERTIFY THAT IT IS THE OWNER OF ALL THE PROPERTY CONTAINED AND INCLUDED IN THE ANNEXED PLAT AND HAS CAUSED SAID PREMISES TO BE SURVEYED AND PLATTED INTO LOTS, BLOCKS, STREETS AND EASEMENTS, AS SHOWN ON SAID ANNEXED PLAT, WHICH SAID PLAT (CONSISTING OF ONE SHEET) REPRESENTS A CAREFUL SURVEY OF ALL PROPERTY CONTAINED AND INCLUDED THEREIN AND IS HEREBY ADOPTED AS THE PLAT OF SAID LAND UNDER THE NAME OF FROLICH MEADOWS ESTATES, BLOCKS 15-18, INCLUSIVE, AN ADDITION TO THE CITY OF OKLAHOMA CITY, OKLAHOMA COUNTY, OKLAHOMA.

THE UNDERSIGNED DOES HEREBY FURTHER CERTIFY THAT IT IS THE OWNER OF THE LAND AND THE ONLY CORPORATION OR CORPORATIONS, PERSON OR PERSONS, OR ENTITY HAVING ANY RIGHT, TITLE OR INTEREST IN AND TO THE LAND INCLUDED IN SAID ANNEXED PLAT, EXCEPT AS SET FORTH IN THE BONDED ABSTRACTER'S CERTIFICATE, AND DOES HEREBY DEDICATE ALL STREETS AND EASEMENTS SHOWN ON SAID PLAT TO THE USE OF THE PUBLIC AS PUBLIC HIGHWAYS, STREETS AND UTILITY EASEMENTS, FOR ITSELF, ITS SUCCESSORS AND ASSIGNS FOREVER AND HAS CAUSED THE SAME TO BE RELEASED FROM ANY AND ALL ENCUMBRANCES SO THAT TITLE IS CLEAR AS TO SAID STREETS AND EASEMENTS.

THE OWNER'S RESTRICTIVE COVENANTS AND LIMITATIONS FOR THE DEVELOPMENT OF THIS ADDITION ARE SET OUT ON TYPEWRITTEN SHEETS OF PAPER AND WILL SUBSEQUENTLY BE FILED SEPARATELY.

IN WITNESS WHEREOF, THE UNDERSIGNED HAVE EXECUTED THIS INSTRUMENT AT OKLAHOMA CITY, OKLAHOMA, ON THIS 30 DAY OF NOVEMBER, 1988.

ATTEST: SOUTHWEST TITLE & TRUST COMPANY  
By Dorothy Whitte ASSISTANT SECRETARY  
By Bill Hardy VICE PRESIDENT

STATE OF OKLAHOMA )  
COUNTY OF OKLAHOMA ) SS  
THE FOREGOING INSTRUMENT WAS ACKNOWLEDGED BEFORE ME THIS 30 DAY OF NOVEMBER, 1988, BY BILL HARDY, AS VICE PRESIDENT OF SOUTHWEST TITLE & TRUST COMPANY, AN OKLAHOMA CORPORATION, ON BEHALF OF THE CORPORATION.

MY COMMISSION EXPIRES THE 27 DAY OF JANUARY, 1991.  
Sheresa Ann Burton  
NOTARY PUBLIC

### BONDED ABSTRACTER'S CERTIFICATE

THE UNDERSIGNED, DULY QUALIFIED ABSTRACTER IN AND FOR THE COUNTY OF OKLAHOMA, STATE OF OKLAHOMA, HEREBY CERTIFIES THAT ACCORDING TO THE RECORDS OF SAID COUNTY TITLE TO THE LAND SHOWN ON THE ANNEXED PLAT OF FROLICH MEADOWS ESTATES, BLOCKS 15-18, INCLUSIVE, AN ADDITION TO THE CITY OF OKLAHOMA CITY, OKLAHOMA COUNTY, OKLAHOMA, APPEARS TO BE VESTED IN SOUTHWEST TITLE & TRUST COMPANY, ON THE 30 DAY OF NOVEMBER, 1988, UNENCUMBERED BY PENDING ACTIONS, JUDGMENTS, LIENS, TAXES, OR OTHER ENCUMBRANCES, EXCEPT MINERAL CONVEYANCES, RIGHTS-OF-WAY AND EASEMENTS OF RECORD AND GENERAL MORTGAGES OF RECORD.

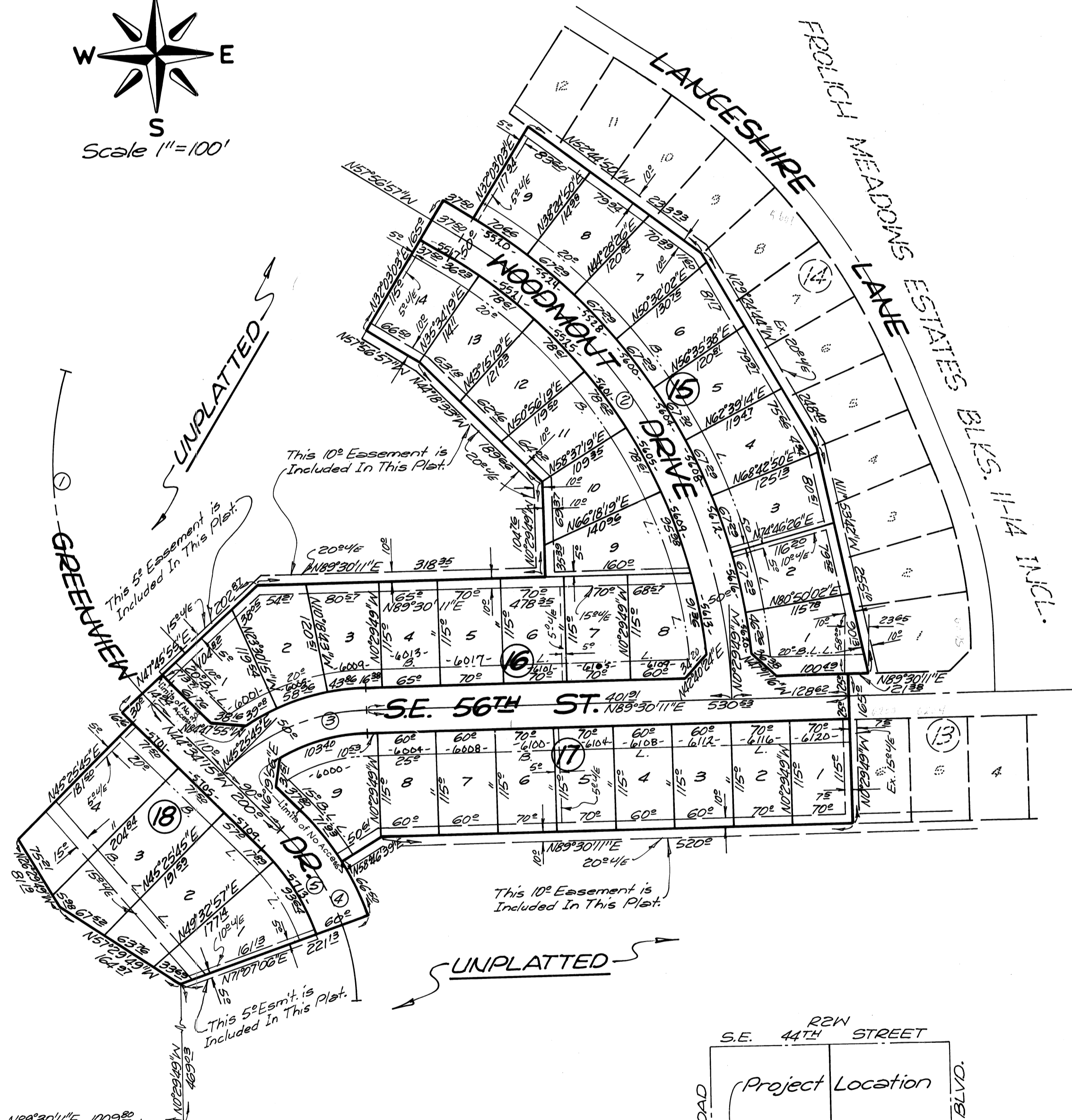
ATTEST: SOUTHWEST TITLE & TRUST COMPANY  
By Dorothy Whitte ASSISTANT SECRETARY  
By Bill Hardy EXEC. VICE PRESIDENT

### COUNTY TREASURER'S CERTIFICATE

I, JOE B. BARNES, DO HEREBY CERTIFY THAT I AM THE DULY ELECTED, QUALIFIED AND ACTING COUNTY TREASURER OF OKLAHOMA COUNTY; THAT THE RECORDS OF SAID COUNTY SHOW ALL TAXES ARE PAID FOR THE YEAR 1989 AND PRIOR YEARS ON THE LAND SHOWN ON THE ANNEXED PLAT OF FROLICH MEADOWS ESTATES, BLOCKS 15-18, INCLUSIVE, AN ADDITION TO THE CITY OF OKLAHOMA CITY, OKLAHOMA COUNTY, STATE OF OKLAHOMA; THAT THE REQUIRED STATUTORY SECURITY HAS BEEN DEPOSITED IN THE OFFICE OF THE COUNTY TREASURER, GUARANTEEING PAYMENT OF THE CURRENT YEAR'S TAXES.

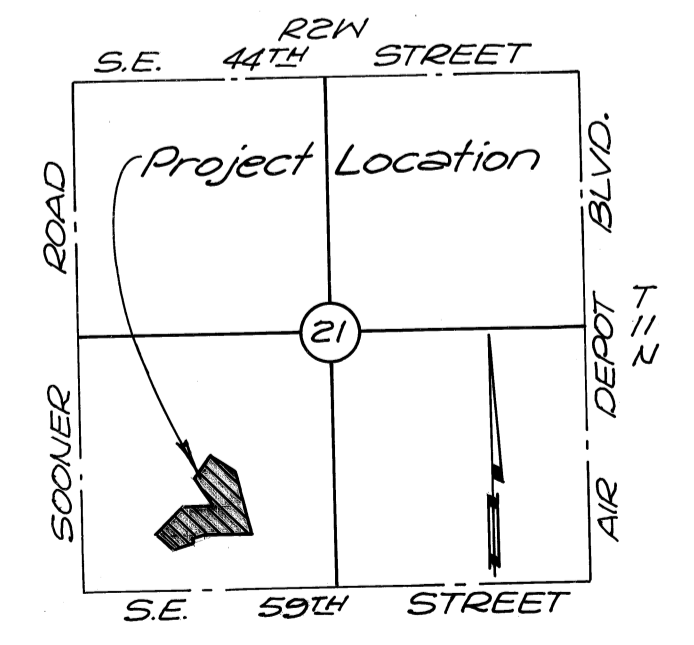
IN WITNESS WHEREOF, SAID COUNTY TREASURER HAS CAUSED THIS INSTRUMENT TO BE EXECUTED AT OKLAHOMA CITY, OKLAHOMA, THIS 10 DAY OF JANUARY, 1989.

OKLAHOMA COUNTY TREASURER  
By Joni Howard First Deputy



S.W. Cor. S.W. 1/4, Sec. 21,  
T11N, R2W, I.M.

#	Δ	R	L	T
1	61°58'15"	366.25	396.25	220.00
2	57°27'08"	611.23	612.00	335.00
3	44°04'26"	231.25	177.74	93.53
4	43°04'15"	278.75	209.54	110.00 (Full)
5	25°41'21"	278.75	124.28	—



9.3601 ± AC  
36 Lots

### PLANNING COMMISSION APPROVAL

I, THE UNDERSIGNED, CHAIRMAN OF THE CITY PLANNING COMMISSION OF THE CITY OF OKLAHOMA CITY, OKLAHOMA, DO HEREBY CERTIFY THAT THE PLANNING COMMISSION OF SAID CITY DULY APPROVED THE ANNEXED PLAT OF FROLICH MEADOWS ESTATES, BLOCKS 15-18, INCLUSIVE, AN ADDITION TO THE CITY OF OKLAHOMA CITY, ON THE 16 DAY OF DECEMBER, 1988.

James A. Barber  
PLANNING COMMISSION CHAIRMAN

### ACCEPTANCE OF DEDICATION

BE IT HEREBY RESOLVED BY THE COUNCIL OF THE CITY OF OKLAHOMA CITY THAT THE DEDICATIONS SHOWN ON THE ANNEXED PLAT OF FROLICH MEADOWS ESTATES, BLOCKS 15-18, INCLUSIVE, AN ADDITION TO THE CITY OF OKLAHOMA CITY, ARE HEREBY ACCEPTED.

ADOPTED BY THE COUNCIL OF THE CITY OF OKLAHOMA CITY THIS 3 DAY OF JANUARY, 1989.  
APPROVED BY THE MAYOR OF THE CITY OF OKLAHOMA CITY THIS 3 DAY OF JANUARY, 1989.

Thomas P. Hensley  
CITY CLERK

James A. Barber  
MAYOR

### CITY CLERK'S CERTIFICATE

I, THE UNDERSIGNED, CITY CLERK OF THE CITY OF OKLAHOMA CITY, OKLAHOMA, DO HEREBY CERTIFY THAT I HAVE EXAMINED THE RECORDS OF SAID CITY AND FIND THAT ALL DEFERRED PAYMENTS OR UNMATURED INSTALLMENTS UPON SPECIAL ASSESSMENTS HAVE BEEN PAID IN FULL AND THAT THERE IS NO SPECIAL ASSESSMENT PROCEDURE NOW PENDING AGAINST THE LAND SHOWN ON THE ANNEXED PLAT OF FROLICH MEADOWS ESTATES, BLOCKS 15-18, INCLUSIVE, AN ADDITION TO THE CITY OF OKLAHOMA CITY, OKLAHOMA, ON THE 3 DAY OF JANUARY, 1989.

Thomas P. Hensley  
CITY CLERK

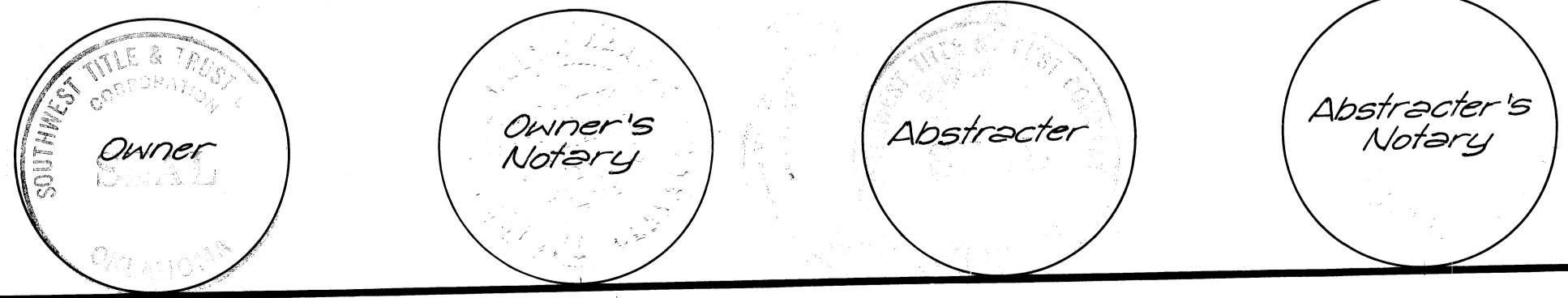
### SURVEYOR'S CERTIFICATE

I, WENDELL R. PHILLIPS, REGISTERED LAND SURVEYOR No. 370 IN THE STATE OF OKLAHOMA, HEREBY CERTIFY THAT THE ANNEXED PLAT OF FROLICH MEADOWS ESTATES, BLOCKS 15-18, INCLUSIVE, AN ADDITION TO THE CITY OF OKLAHOMA CITY, OKLAHOMA COUNTY, OKLAHOMA, REPRESENTS A CAREFUL SURVEY THEREOF MADE UNDER MY SUPERVISION AND THAT ANY MONUMENTS SHOWN THEREON ACTUALLY EXIST AND THEIR RESPECTIVE POSITIONS ARE CORRECTLY SHOWN.

Wendell R. Phillips  
WENDELL R. PHILLIPS,  
OKLAHOMA LAND SURVEYOR No. 370

STATE OF OKLAHOMA )  
COUNTY OF OKLAHOMA )  
THE FOREGOING INSTRUMENT WAS ACKNOWLEDGED BEFORE ME THIS 29TH DAY OF JUNE, 1988, BY WENDELL R. PHILLIPS.  
MY COMMISSION EXPIRES THE 10TH DAY OF DECEMBER, 1989.

D. M. Halmer  
NOTARY PUBLIC



**Phillips & Stong**  
Consulting Engineers and Land Surveyors  
(405) 751-1463

9636 N MAY AVENUE SUITE 274 OKLA. CITY, OKLA. 73120-2714