

DRAWING NUMBER
1/12

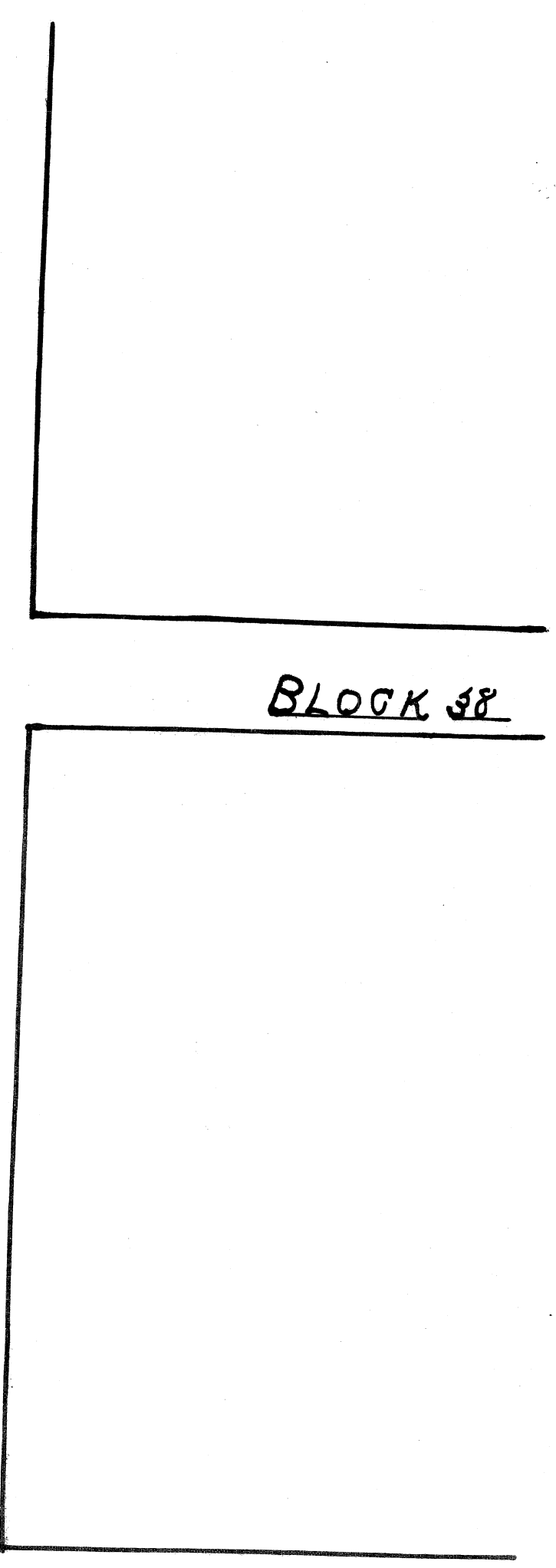
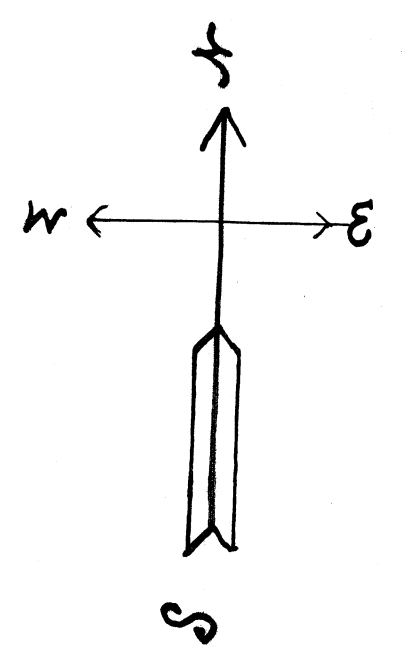
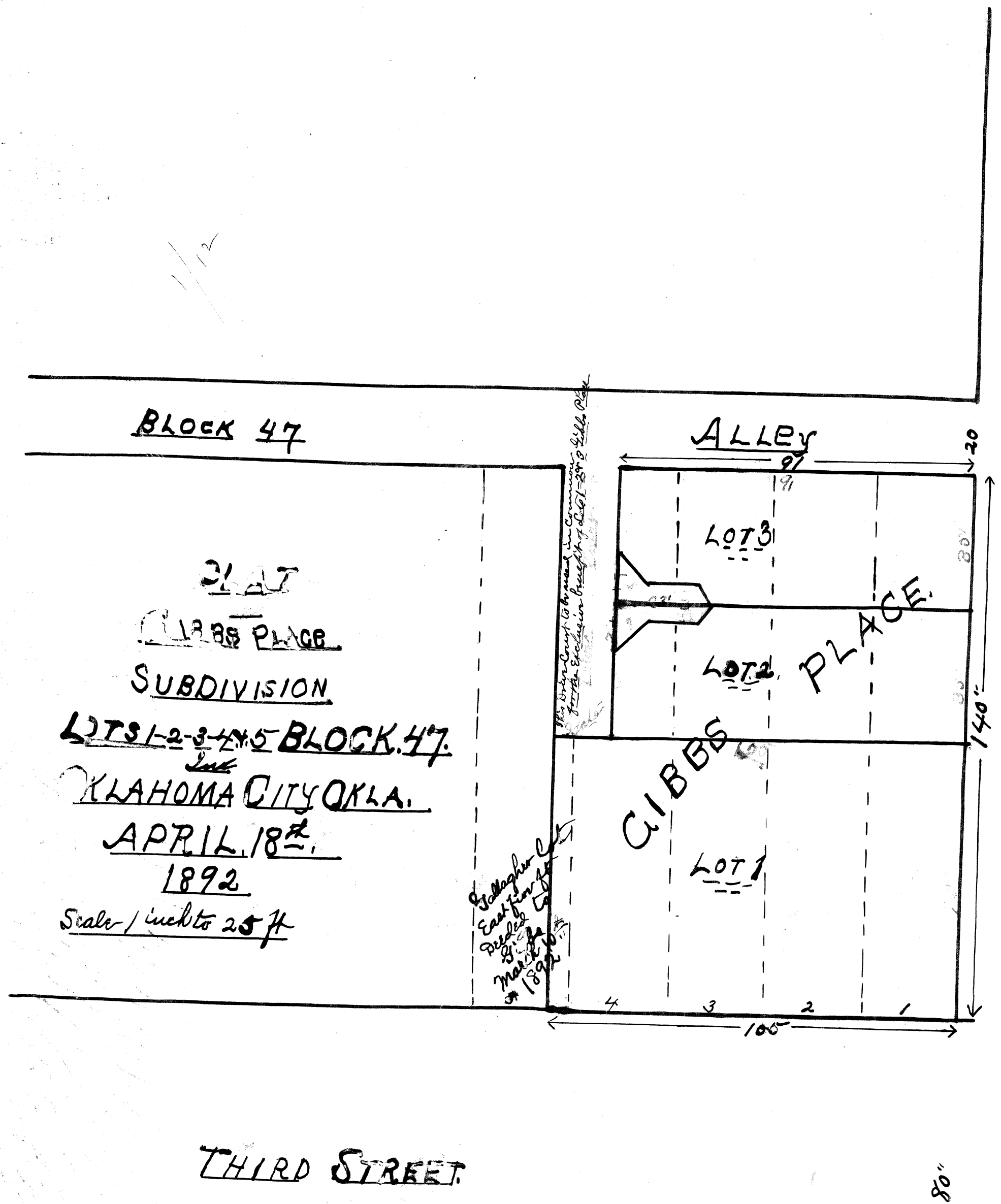
PLAN HOLD CORPORATION • IRVINE, CALIFORNIA
REGISTERED NUMBER 075348
NATIONAL BUREAU OF FIRE INSURANCE

DRAWING NUMBER

PLAN HOLD CORPORATION • IRVINE, CALIFORNIA
REGISTERED NUMBER 075348
NATIONAL BUREAU OF FIRE INSURANCE

DRAWING NUMBER

PLAN HOLD CORPORATION • IRVINE, CALIFORNIA
REGISTERED NUMBER 075348
NATIONAL BUREAU OF FIRE INSURANCE



1/12

Territory of Oklahoma } ss.
County of Oklahoma } ss.
This instrument filed for Record on this
21st day of April A.D. 1892 at 9:00 A.M.
and duly recorded in Platte Record and on
Page 12. R.A. Maudslayi
Seal Registrar of Deeds.

Block 48

