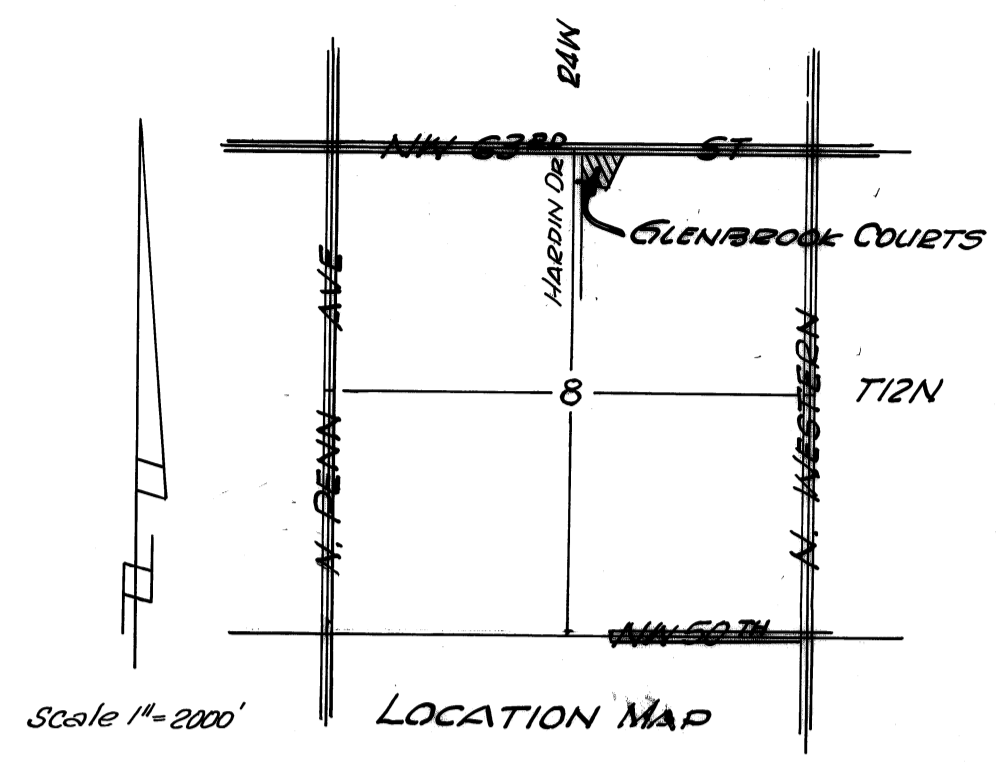


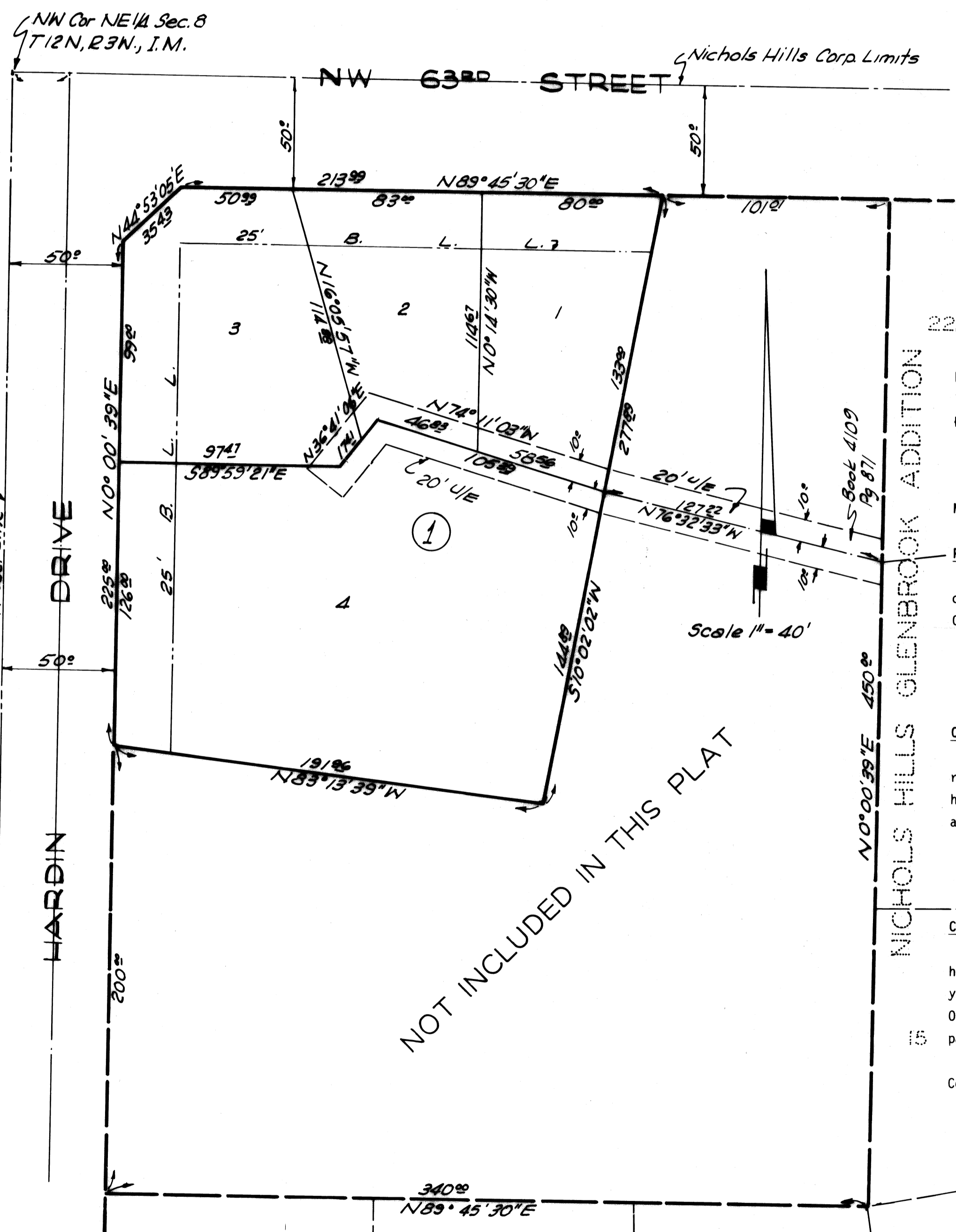
# GLENBROOK COURTS ADDITION

A SUBDIVISION IN NE 1/4, Sec. 8, T12N, R3W, I.M.  
OKLAHOMA CITY, OKLAHOMA COUNTY, OKLAHOMA

BOOK 46  
PAGE 55  
FEET \$5.00



SHERWOOD SEC. NICHOLS HILLS



NOT INCLUDED IN THIS PLAT

NOT INCLUDED IN THIS PLAT

### OWNER'S CERTIFICATE AND DEDICATION

KNOW ALL MEN BY THESE PRESENTS: That TOM FAUSETT BUILDING CO., an Oklahoma Corporation, hereby certifies that it is the owner of all the property contained and included in the annexed plat of GLENBROOK COURTS ADDITION and has caused the said premises to be surveyed and platted into lots, blocks, streets and utility easements as shown on said annexed plat, which said annexed plat represents a correct survey of all property contained and included therein and is hereby adopted as the plat of said land under the name GLENBROOK COURTS ADDITION to the City of Oklahoma City, Oklahoma County, Oklahoma. The undersigned does hereby further certify that it is the owner of the land and the only person, corporation or entity having any right, title or interest in and to the land included in said plat, except as set forth in the Bonded Abstractor's Certificate, and does hereby dedicate all streets and easements shown on said plat to the use of the public as public highways and utility easements, for itself, its successors and assigns forever, and has caused the same to be released from any and all encumbrances so that title is clear as to said streets and easements.

IN WITNESS WHEREOF the undersigned has executed this instrument at Oklahoma City, Oklahoma, this 18th day of September, 1975.

ATTEST:  
By: *Tom D. Fausett*  
Secretary  
By: *Tom D. Fausett*  
Tom D. Fausett, President

STATE OF OKLAHOMA )  
COUNTY OF OKLAHOMA ) SS  
Before me, the undersigned, a Notary Public in and for said County and State, on this 18th day of September 1975, personally appeared TOM D. FAUSETT, to me known to be the identical person who executed the within and foregoing instrument as President, and acknowledged to me that he executed the same as his free and voluntary act and deed and as the free and voluntary act and deed of said Corporation.  
WITNESS my hand and notarial seal the day and year last above written.

My Commission Expires the 10th day of December, 1977.

*A. M. Holmer*  
Notary Public

### BONDED ABSTRACTOR'S CERTIFICATE

The undersigned, duly qualified abstractor in and for the State of Oklahoma, County of Oklahoma, hereby certifies that according to the records of said County, title to the land shown on the annexed plat of GLENBROOK COURTS ADDITION to Oklahoma City, Oklahoma County, Oklahoma, appears to be vested in the TOM FAUSETT BUILDING CO., an Oklahoma Corporation, on this 16th day of NOVEMBER, 1976.

ATTEST:  
By: *Donald L. Deal*  
Assistant Secretary  
By: *Donald L. Deal*  
SR. Vice-President

AMERICAN-FIRST TITLE & TRUST COMPANY

### ACCEPTANCE OF DEDICATION

BE IT HEREBY RESOLVED by the Council of the City of Oklahoma City, Oklahoma, that the dedication shown on the annexed plat of GLENBROOK COURTS ADDITION to Oklahoma City, Oklahoma, is hereby accepted.  
ADOPTED by the Council of the City of Oklahoma City, Oklahoma, this 9th day of December, 1975.  
APPROVED by the Mayor of the City of Oklahoma City, Oklahoma, this 9th day of December, 1975.

ATTEST:  
By: *E. Ray Long*  
City Clerk  
By: *William S. Letting*  
Mayor

NICHOLS HILLS GLENBROOK ADDITION

### LAND SURVEYOR'S CERTIFICATE

I, WENDELL R. PHILLIPS, Registered Land Surveyor No. 370 in the State of Oklahoma, hereby certify that the annexed plat of GLENBROOK COURTS ADDITION to Oklahoma City, Oklahoma, correctly represents an accurate survey thereof made under my supervision and that the monuments shown thereon actually exist and their respective positions are correctly shown.

*Wendell R. Phillips*  
Wendell R. Phillips, Okla. L.S. #370

STATE OF OKLAHOMA )  
COUNTY OF OKLAHOMA ) SS

Before me, the undersigned, a Notary Public in and for said County and State on this 9th day of September, 1975, personally appeared WENDELL R. PHILLIPS, to me known to be the identical person who executed the within and foregoing instrument and acknowledged to me that he executed the same as his free and voluntary act and deed for the uses and purposes therein set forth.  
WITNESS my hand and notarial seal the day and year last above written.

My Commission Expires the 10th day of December, 1977.

*A. M. Holmer*  
Notary Public

### PLANNING COMMISSION APPROVAL

I, ROBERT M. FRANK, Chairman of the City Planning Commission of the City of Oklahoma City, Oklahoma, do hereby certify that the said Planning Commission duly approved the annexed plat of GLENBROOK COURTS ADDITION to Oklahoma City, Oklahoma, at a meeting on the 23rd day of October, 1975.

*R. M. Frank*  
Chairman, Oklahoma City Planning Commission

### CITY CLERK'S CERTIFICATE

I, E. RAY LONG, City Clerk of the City of Oklahoma City, Oklahoma, hereby certify that I have examined the records of said City of Oklahoma City and find all deferred payments or unmaturing installments upon special assessments have been paid in full and that there is no special assessments procedure now pending against the land shown on the annexed plat of GLENBROOK COURTS ADDITION to Oklahoma City, Oklahoma, on the 9th day of December, 1975.

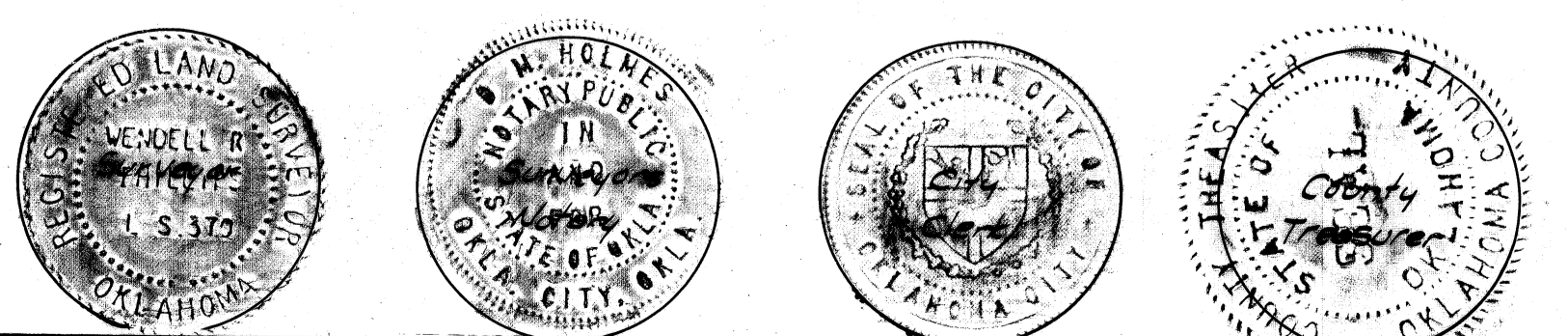
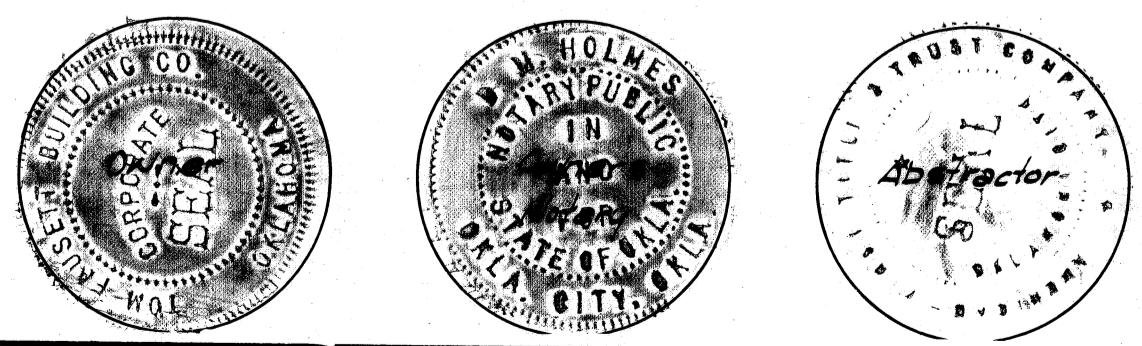
*E. Ray Long*  
City Clerk

### COUNTY TREASURER'S CERTIFICATE

I, JOE B. BARNES, do hereby certify that I am the duly elected, qualified and acting County Treasurer of Oklahoma County, State of Oklahoma; that the tax records of said County show all taxes are paid for the year 1975 and prior years on the land shown on the annexed plat of GLENBROOK COURTS ADDITION to Oklahoma City, Oklahoma County, State of Oklahoma; that the required statutory security has been deposited in the office of the County Treasurer, guaranteeing payment of the correct year's taxes.

IN WITNESS WHEREOF, said County Treasurer has caused this instrument to be executed at Oklahoma City, Oklahoma County, Oklahoma, this 16th day of NOVEMBER, 1976.

JOE B. BARNES, County Treasurer  
By: *Sherald W. Woodley*  
Chief Deputy



Plat By: PHILLIPS & STONG ENGINEERING CO.  
2832 Wilshire Blvd. Oklahoma City, Okla.

BOOK 46 PAGE 55