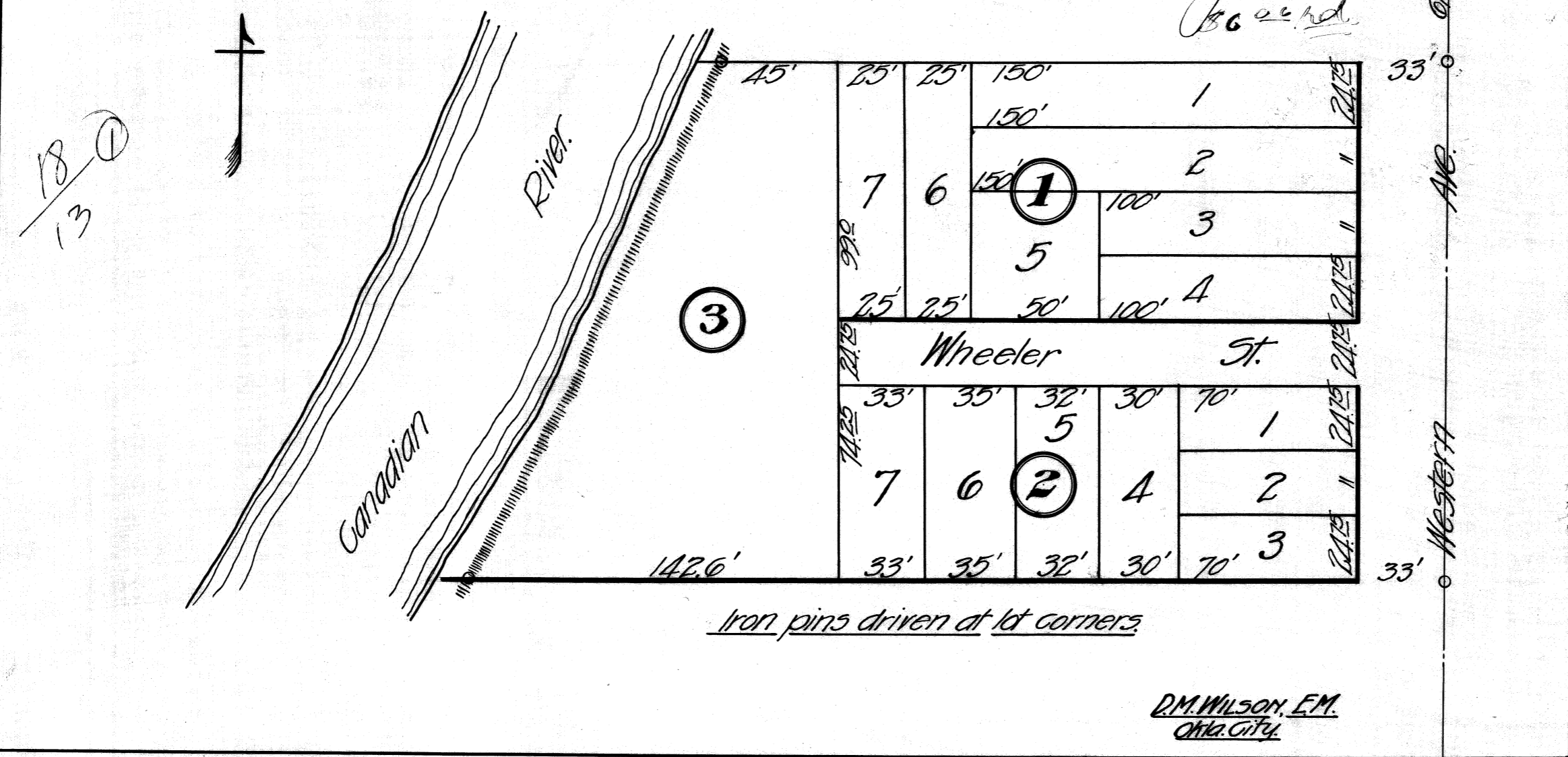


1 of 3

DRAWING NUMBER
18/13

PLAN HOLD CORPORATION * IRVINE, CALIFORNIA
REORDER BY NUMBER 075AR
POSITION EDGE OF PRINT ON THIS LINE

GOLDBERG'S SUBDIVISION OF
LOTS 9 TO 16 INCLUSIVE
GLENDALE
OKLAHOMA CITY, OKLA.



D.M. WILSON, E.M.
OKLA. CITY

DRAWING NUMBER
18/13

2 of 3

PLAN HOLD CORPORATION • IRVINE, CALIFORNIA
REORDER BY NUMBER 075AR

KNOW ALL MEN BY THESE PRESENTS:

That we, W. H. Brown and Ellen Brown (his wife)
H. Goldberg and Lena Goldberg (his wife) and Samuel
G. Murphy and Cora B. Murphy (his wife).

the owners of lots Nos. Nine (9), Ten (10), Eleven (11), Twelve (12),
Thirteen (13), Fourteen (14), Fifteen (15) and Sixteen (16) in
Glendale Addition to Oklahoma City, Oklahoma, have caused these lots
to be subdivided into Blocks, Lots and Street, and designate the same
as GOLDBERG'S SUBDIVISION, an addition to Oklahoma City, Oklahoma County
State of Oklahoma, as set forth on the annexed map or plat.

All streets are dedicated to the public use forever.

12
13 (2)

W. H. Brown
Ellen Brown
H. Goldberg
Lena Goldberg
Samuel G. Murphy
Cora B. Murphy

State of Oklahoma

Oklahoma County SS

Before me, W. W. Cannon, a Notary Public
in and for said County and State, on this 25th day of November
1911, personally appeared

W. H. Brown Ellen Brown. H. Goldberg Lena Goldberg
Samuel G. Murphy and Cora B. Murphy

to me well known to be the identical persons who executed the within
and foregoing instrument and acknowledged to me that they executed the
same as their own free and voluntary act and deed for the uses and
purposes therein set forth.

Witness my hand and official seal the day and year above
set forth.

W. W. Cannon
Notary Public.

My Commission Expires Feb. 17th 1913.

DRAWING NUMBER

18/13

3 of 3

PLAN HOLD CORPORATION • IRVINE, CALIFORNIA

REORDER BY NUMBER 075AR

POSITION EDGE OF PRINT ON THIS LINE

I, D. M. Wilson, a resident of Oklahoma County, State of Oklahoma, hereby certify that I am by profession a Civil Engineer, and at the instance of the above named owners of lots Nos. Nine to Sixteen inclusive in Glendale Addition to Oklahoma City, Oklahoma, I made a survey of the above named lots, and that a correct map or plat of said land as surveyed by me is set forth on the annexed map or plat.
Signed this 17 day of November 1911.

D. M. Wilson
Civil Engineer.

18
13 (3)

State of Oklahoma

Oklahoma County SS

Before me, John W. Niceley, a Notary Public in and for said County and State on this 17 day of November 1911, personally appeared D. M. Wilson to me well known to be the identical person who executed the within and foregoing instrument, and acknowledged to me that he executed the same as his own free and voluntary act and deed for the uses and purposes therein set forth.

Witness my hand and official seal the day and year above set forth.

John W. Niceley
Notary Public.

My Commission Expires March 19th 1914.

13