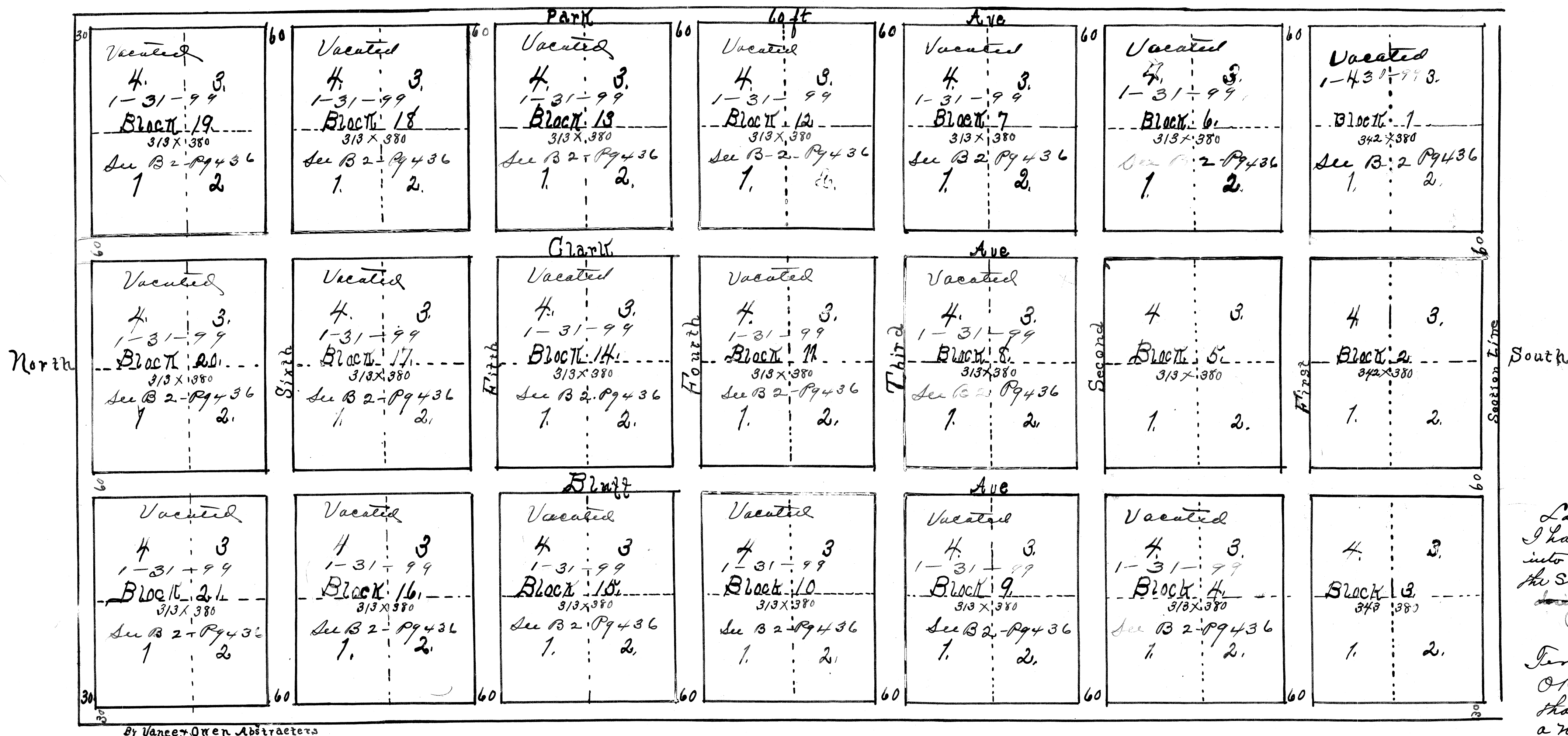


East half of the South West Quarter of Section Twenty One.
T 12ⁿ R 3 west 3^d M.
Scale 1/4 in. to one Rod.



I William Guernsey the owner of the Land above described do hereby certify that I have caused the same to be surveyed and platted into Lots, Blocks and Streets, and I do hereby designe the same as Guernsey Court Place and the portions ~~described as Streets~~ as hereby dedicated to the Public Use
 William Guernsey,

Territory of Oklahoma ss
 Oklahoma County } ss J. M. Owen Clerk
 that on this 23^d Day of June 1892 before me a Notary Public in and for said County and Territory personally appeared William Guernsey and executed the above instrument and acknowledged the execution thereof to be his free and voluntary act for the purposes aforesaid.
 Witness my hand and official Seal this Day and year last above written
 Seal J. M. Owen
 Notary Public
 My Comm. Expires Dec 27th 1894

Guernsey Park Place Out Lots.

Territory of Oklahoma ss
 Oklahoma County } ss
 This instrument was filed for Record this 23^d Day of June 1892 at 11^o 52^o clock a.m.

By J. M. Owen Dep
 Register of Deeds

Territory of Oklahoma ss
 Oklahoma County } ss O. H. Hill do hereby
 certify that the above is a true, complete and correct Plat of the E 1/2 of the S.W. 1/4 of Sec 21 Township 12 N of Range 3 W

O. H. Hill
 Surveyor

DRAWING NUMBER
 1/13

DRAWING NUMBER
 1/13

DRAWING NUMBER
 1/13

1/13

PLAN-HOLD CORPORATION - IRVINE, CALIFORNIA
 REGISTERED BY NUMBER 07248
 NATIONAL PLAN OF PRINTING IN 1914

PLAN-HOLD CORPORATION - IRVINE, CALIFORNIA
 REGISTERED BY NUMBER 07248
 NATIONAL PLAN OF PRINTING IN 1914

PLAN-HOLD CORPORATION - IRVINE, CALIFORNIA
 REGISTERED BY NUMBER 07248
 NATIONAL PLAN OF PRINTING IN 1914